

# **LOOSE** **NEIGHBOURHOOD** **PLAN**

**RESULTS OF THE  
VILLAGE VISIONING EVENT  
10<sup>th</sup> SEPTEMBER 2014**

**RESULTS FROM THE  
VILLAGE VISIONING EVENT**  
SEPTEMBER 2014





doc. ref: 109\_Q\_131013\_Feria-Urbanism\_FINAL

Feria Urbanism is a planning + design studio that specialises in urban design, urban planning, urban strategies, public participation and community engagement. Established in 2007, we have been involved in a diverse range of projects across the UK and have developed key skills in organising community engagement events that inform urban and rural strategies.

contact for further information

**Richard Eastham | Feria Urbanism | [www.feria-urbanism.eu](http://www.feria-urbanism.eu)**  
**+ 44 (0) 7816 299 909 | + 44 (0) 1202 548 676**

All maps within this document are reproduced from the Ordnance Survey mapping with the permission of the Controller of Her Majesty's Stationary Office. © Crown Copyright. Unauthorised reproduction infringes Crown Copyright and may lead to prosecution and civil proceedings. The Maidstone Borough Council Licence No. 100019636, 2011.



# CONTENTS



## VILLAGE VISIONING

**page 07**  
Starting the planning process

**page 10**  
Task 01 Results

**page 17**  
Task 02 Results

**page 22**  
Task 03 Results

**page 26**  
Task 04 Results

**page 31**  
Task 05 Results

**page 38**  
Task 06 Results

**page 44**  
Task 07 Results

**page 50**  
Task 08 Results

**page 56**  
Copies of the workshop materials



# IDENTIFYING POLICY THEMES FOR THE PLAN



# STARTING THE PLANNING PROCESS

## THIS SHORT REPORT SETS OUT THE MAIN FINDINGS OF THE VISIONING EVENT HELD IN LOOSE ON 10.09.14.

The workshop began with a short slideshow from the Feria Urbanism team setting out the planning timetable and process through to October 2014 and then introducing the evening's tasks. The aim of these tasks was to inform the main themes and areas of policy focus for the project moving forward, especially at the three-day event in October.

**Task 01** To help understand more about the challenges and opportunities for different demographic groups. **Task 02** To help define what makes Loose unique. Knowing more about the strengths of the village can help inform plan policies that will enhance and protect these positive qualities. **Task 03** To help define the main challenges facing the village. The plan process will then prioritise identifying the ways and means of addressing these challenges. **Task 04** To learn from other places. Where are the best bits that can act as inspiration? And where are the mistakes we don't wish to repeat? **Task 05** If the village is to grow, which direction will be best and why? This task should think about all future opportunities. **Task 06** How do people move around and which are the preferred routes? What are the challenges associated with movement? Not just cars, but all modes of travel. **Task 07** What does the future hold? What is good now but could be improved further? **Task 08** Which parts of the parish feel safe or unsafe and at which time of day or night?

The way the evening unfolded was as follows: each task was be laid out on a table, with the necessary equipment (plans, pens, stickers etc.) The participants worked in groups and complete each task in order. They had 15 minutes max. to complete the tasks before moving onto the next one in order. The Feria Urbanism team were clock watching the clock and let them know when it was time to move on. In this way, each task was completed multiple times over 2 hours. This started the process of building a consensus. For example, the same key words are appearing in several tasks showing there is clearly a consistency of opinion developing. The neighbourhood plan can then prioritise these issues.





The workshop format allowed residents to share ideas through a facilitated discussion.

# VILLAGE VISIONING

The results from this event have given the parish council team and its professional planning and design consultants a good insight to the key concerns held by residents, businesses and organisations active in Loose. This will provide a valuable platform for further work on the neighbourhood plan.

While many of these concerns were widely known beforehand, having them expressed and recorded in a public forum such as this is a vital part of the consultation and engagement process necessary for the production of the robust planning document.

## ALL PLACES ARE EITHER GROWING OR DECLINING. NOTHING STAYS THE SAME.

The parish council were thrilled with the turnout for the visioning event held on Wednesday 10th September. This is the summary report from the event, capturing through words, photographs and drawings the outcomes.

With over 100 participants, the evening generated a huge amount of material and many great ideas from the local community. This means the Loose neighbourhood plan has got off to a terrific start.

The information generated during the night is being used to help inform how the next stages of the process will be run and set out some of the priorities for the neighbourhood plan.

The parish council are aware that the huge numbers that turned up overwhelmed the small venue — many had to stand outside at the start of the night — and as a result, many people felt unable to contribute fully to the discussion. For this, the parish council apologies and sincerely hopes that this has not put people off from taking part in future stages of the plan.

The next event in the neighbourhood plan process is the three-day design forum to be held on Tuesday 21st, Wednesday 22nd and Thursday 23rd of October 2014. In contrast to the intensive and rapid-fire format of the visioning event, these three days will be much more considered and allow for more time for debate and discussion.



Standing room only, with many outside the pavilion, at the start of the visioning event.





Some of the many different faces that took part in the village visioning event



An exchange of ideas between the young and the even younger



IT WAS CLEAR FROM THE VARIETY OF FACES AND CHARACTERS THAT TOOK PART IN THE EVENT THAT IN LOOSE IT IS

**“the people  
that make the  
place”**

AND THIS PERSONALITY SHOULD BE REFLECTED IN THE FINAL  
VERSION OF THE LOOSE NEIGHBOURHOOD PLAN



**Task 01** Workshop participants debate the challenges faced by different demographic groups

## TASK 01 — PEOPLE + PLACES

### TEENAGERS

**OPPORTUNITIES** King George V field is the most favoured place to visit in the neighbourhood (mentioned 6 times) // Sufficient amount of public transport to adjacent neighbourhoods (mentioned 5 times) // The Scouts provides opportunities to go outdoors, meet friends and socialise (mentioned 3 times) // Beautiful outdoor green spaces (mentioned 3 times) // YMCA provides indoor meeting space that occasionally holds events (mentioned 3 times) // Good schools // Opportunities to go fishing or for nice walks.

**CHALLENGES** There are no cycle lanes making it hard to get to friends' houses, park or YMCA (mentioned 4 times) // Area can get dull with no new activities taking place (mentioned 3 times) // Public transport is expensive (mentioned 2 times) // Some of the roads are unsuitable and unsafe to walk on // A limited amount of youth organisations, events or facilities // Limited work experience opportunities // King George V playing field can feel unsafe sometimes.

**CONCLUSIONS** The teenagers are having a very difficult time as they cannot walk, cycle or get public transport, then rely on parents to drive them causing more congestion or traffic. The area offers a range of outdoor spaces but these can get 'boring' after a while. The YMCA offers an indoor meeting area and hold a few youth organisations every so often but this is not enough. Are the play areas in the neighbourhood targeted at younger children?

## BUSINESS + EMPLOYERS

**OPPORTUNITIES** A good area for broadband // Close to Maidstone and London for employment opportunity // An area that is ideal for working at home or running small, bespoke businesses // There is a good public transport link into London and surrounding areas // There is a lot of old, run-down buildings that can be converted into offices helping to control business expansion // Sustainable development employment.

**CHALLENGES** A poor motorway link reduces trade in and out of the neighbourhood (mentioned 3 times) // New businesses will only encourage more traffic // With the exception of old buildings to renovate, there is a limited amount of premises to start up a business // There is too many traffic lights giving a greater journey time to and fro from work // Many of the local shop don't encourage enough local produce // High Rates // Limited parking – always a debate as to what is residential and what is commercial parking.

**CONCLUSIONS** There often appears an inconsistency about whether or not the A229 is a good or poor road link. A few people mentioned the need for small, bespoke local business units in the farming areas as there are only a few commercial properties for businesses.

## PENSIONERS + EMPTY-NESTERS

**OPPORTUNITIES** A picturesque place to live (mentioned twice) // A lot of opportunities to volunteer // There is a good OAP home // Good public transport to get around // With the exception of the A229, it is a quiet place to live // A lot of things to do — take walks, play bowls, visit the church.

**CHALLENGES** The parish needs to hold more events, activities and entertainment to socialise // Shortage of buses that goes through the centre of the village (mentioned 3 times) // Lanes are uneven + narrow // Too many cars parking on pavements // Limited amount of doctors // Poor disability access // Hard to walk up Loose Hill // Some areas are unsafe for walking.

**CONCLUSIONS** Volunteering allows them to give a helping hand, socialise with the community, keeps them busy. As a result, they believe that there is a warm and friendly community spirit. Could the pavilion could be open during the day for the elderly? Some people said there is a shortage of buses that goes through the centre of the village and the transport is too expensive Yet others said there is a good transport link — need to investigate this further.

/ 11



**Task 01** Workshop participants discuss their ideas



## YOUNG PROFESSIONALS WITHOUT CHILDREN

**OPPORTUNITIES** Pub provides as a welcoming and controlled area to meet (mentioned twice) // Good place to live and work from home // Great access to green spaces for leisure walking // Good transport links.

**CHALLENGES** Hard to get to the rail station without a direct public access route (mentioned 4 times) // Not many large businesses for employment // Difficult to travel to work in rush hour // Poor routes to M20 and major roads // Lack of cycle lanes // No nice restaurants to meet clients, staff meals // The cost of housing is too high.

**CONCLUSIONS** The lack of cycle infrastructure encourages young professionals to drive to work. Young professionals tend to work in larger companies outside of the neighbourhood adding to the traffic and congestions at school arrival and leaving times. The cost of housing leaves many first time buyers struggling to enter the market, more likely to rent but hard to save for deposit for a house.

/ 12

## FAMILIES WITH YOUNG CHILDREN

**OPPORTUNITIES** Excellent schools (mentioned 3 times) // Good range of after school clubs and facilities // Good play areas // Opportunities to join a youth group // The stream and large amount of green spaces allows for places to play and take walks.

**CHALLENGES** The A229 makes walking to school difficult (mentioned 4 times) // The lack of parking spaces around the schools causes congestion along the A229 at school drop off and pick up times (mentioned twice) // Although there are many schools, the number of places fill up fast // Lack of affordable housing (mentioned twice) // Lack of Pre-schools and nurseries // Not many services for young families or small families // Lack of dedicated cycle facilities.

**CONCLUSIONS** Hard to get into local school as children from adjacent neighbourhoods apply meaning the number of places fills up fast. The walk to school is difficult because the pavements are too narrow for push-chairs / children skipping or running/pets.

## VISITORS + TOURISTS

**OPPORTUNITIES** Beautiful green spaces, attractive and picturesque (mentioned 6 times) // Good pub (mentioned twice) // Historic village (Mentioned twice) // Nice walks // Tea room in the valley provides a central area to socialise within the community.

**CHALLENGES** Lack of signs or brochures displaying tourist or visitor information (mentioned 4 times) // No hotels (mentioned 4 times) // Poor parking (mentioned 3 times) // Lack of restaurants // Limited access if travelling by coach.



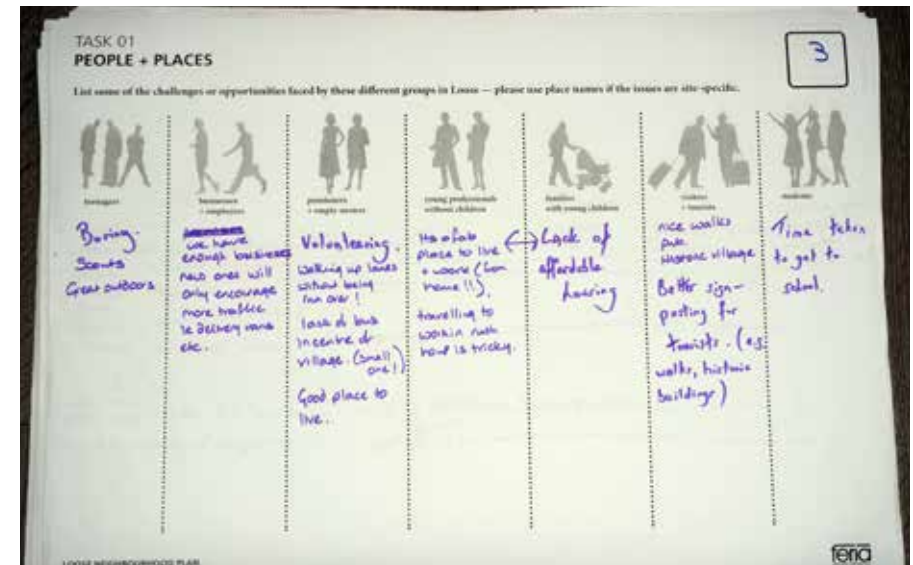
## STUDENTS

**OPPORTUNITIES** Same as teenagers // Two good schools.

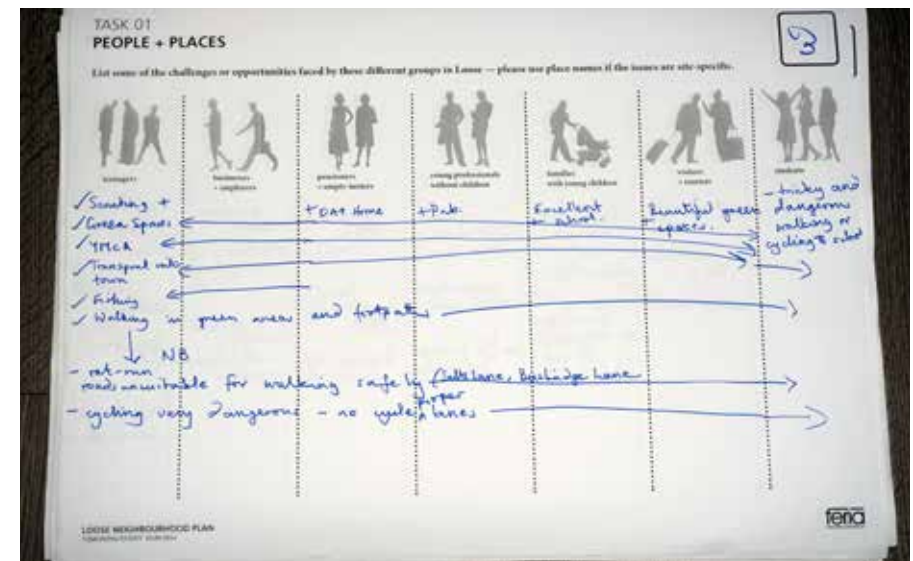
**CHALLENGES** Dangerous to walk or cycling to school // Hard to find local work or experience // No evening activities // No library to help with studies // Slow Internet // Lack of school choice // No local university.

## GENERAL CONCLUSIONS

- Pensioners own the majority of houses as the high housing prices are becoming difficult for young people and families to buy. Although the neighbourhood is a lovely and beautiful place to live, there are few employment opportunities meaning professionals have to travel outside the neighbourhood to get to their place of work.
- With no dedicated cycle infrastructure adjacent to the busy roads, and access routes that feel unsafe, many people travel by car. The only way in and out of the neighbourhood is along the A229 adding more traffic along this road, especially at school drop off and pick up time. To add, this is further congested by the lack of parking.
- Loose parish has a warm, inviting and friendly community that holds various activity and events for pensioners, but young families believe that there could be more targeted towards them.
- This task highlighted that teenagers were the most “vulnerable” group. Although there is a YMCA and an active Scout group providing controlled meeting spaces, the neighbourhood can be seen as “boring” sometimes. With good transport links, but expensive buses, no dedicated cycle routes and areas that feel unsafe for walking, it is difficult for teenage groups to feel at ease in the parish area.



Task 01 Results



Task 01 Results

**TASK 01  
PEOPLE + PLACES**

List some of the challenges or opportunities faced by these different groups in Loose — please use place names if the issues are site-specific.

Immigrants	Homeless + roughsleepers	Homeless + empty houses	Young professionals without children	Families with young children	Elderly + disabled	Students
				Large families walking along Loose Rd. when several children, pushchairs etc. is spreading a dangerous risk to awareness of safety barriers etc.		

LOOSE NEIGHBOURHOOD PLAN  
COMMUNITY VISIONING 2014-2015

feria

Task 01 Results

**TASK 01  
PEOPLE + PLACES**

List some of the challenges or opportunities faced by these different groups in Loose — please use place names if the issues are site-specific.

Immigrants	Homeless + roughsleepers	Homeless + empty houses	Young professionals without children	Families with young children	Elderly + disabled	Students
Have the 1st group of people moved for the better reason?	Continue the job of the 1st group and do not let them go.	Lack of security. Can't get a job. No one to look after the house. Can't get a job. No one to look after the house.	They are in the 1st group of people. They are in the 1st group of people. They are in the 1st group of people.	They are in the 1st group of people. They are in the 1st group of people. They are in the 1st group of people.	They are in the 1st group of people. They are in the 1st group of people. They are in the 1st group of people.	They are in the 1st group of people. They are in the 1st group of people. They are in the 1st group of people.

LOOSE NEIGHBOURHOOD PLAN  
COMMUNITY VISIONING 2014-2015

feria

Task 01 Results

**TASK 01  
PEOPLE + PLACES**

List some of the challenges or opportunities faced by these different groups in Loose — please use place names if the issues are site-specific.

Immigrants	Homeless + roughsleepers	Homeless + empty houses	Young professionals without children	Families with young children	Elderly + disabled	Students
Road unsafe for cycle use, crossing the road. Boredom. Teens visiting by bus from out side of house. King George playing field can be very rough.	Parking & traffic.	access entertainment.	Getting in & out of the Village.	Lack of the school. Doctor access.	Parking is difficult.	

LOOSE NEIGHBOURHOOD PLAN  
COMMUNITY VISIONING 2014-2015

feria

Task 01 Results

**TASK 01  
PEOPLE + PLACES**

List some of the challenges or opportunities faced by these different groups in Loose — please use place names if the issues are site-specific.

Immigrants	Homeless + roughsleepers	Homeless + empty houses	Young professionals without children	Families with young children	Elderly + disabled	Students
They have been in the 1st group of people. They have been in the 1st group of people. They have been in the 1st group of people.	They have been in the 1st group of people. They have been in the 1st group of people. They have been in the 1st group of people.	They have been in the 1st group of people. They have been in the 1st group of people. They have been in the 1st group of people.	They have been in the 1st group of people. They have been in the 1st group of people. They have been in the 1st group of people.	They have been in the 1st group of people. They have been in the 1st group of people. They have been in the 1st group of people.	They have been in the 1st group of people. They have been in the 1st group of people. They have been in the 1st group of people.	They have been in the 1st group of people. They have been in the 1st group of people. They have been in the 1st group of people.

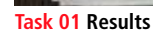
LOOSE NEIGHBOURHOOD PLAN  
COMMUNITY VISIONING 2014-2015

feria

Task 01 Results











**Task 02** Workshop participants discuss their choices regarding the qualities of Loose

## TASK 02 — THIS IS A SPECIAL PLACE

The words **SAFE, GREEN, UNIQUE, ATTRACTIVE** and **FRIENDLY** were used more than 10 times to describe Loose Parish. These were followed by **DISTINCTIVE, OPEN, CLEAN, INSPIRING, HARMONIOUS** and **IMAGINATIVE** to describe the type of place that Loose is.

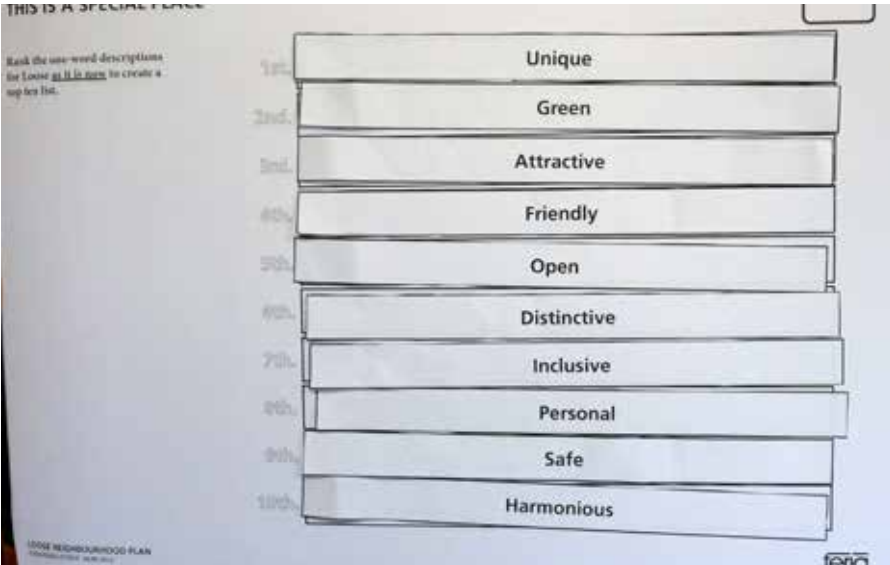
When groups said the word **GREEN** they meant a place with many beautiful, open, picturesque outdoor spaces for many activities.

When groups said the word **CONTAINED** they meant a community of their own that cares for one another and the wider parish.

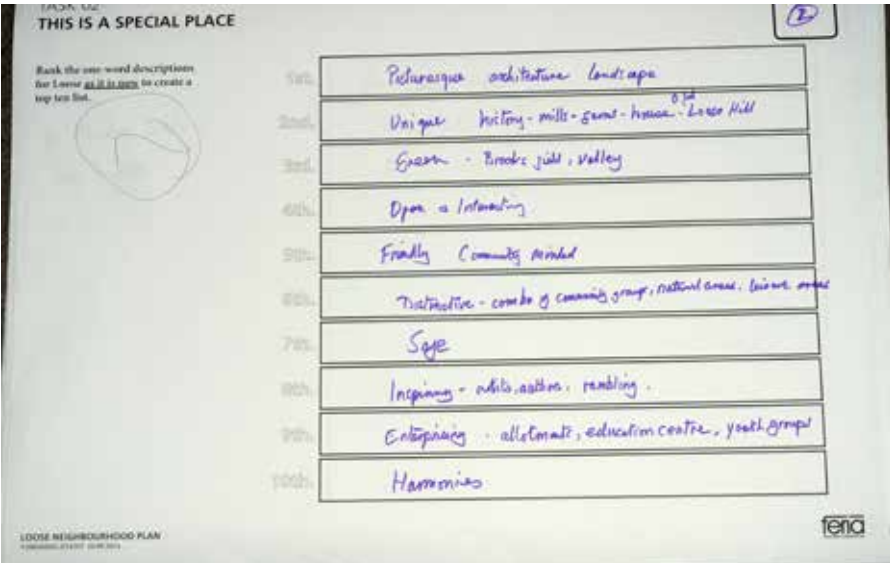
## TOP TEN POSITIVE WORDS

1. Safe
2. Green
3. Unique
4. Attractive
5. Friendly
6. Distinctive
7. Open
8. Clean
9. Inspiring
10. Harmonious

Chosen Word	No. of Appearances in the Results
Safe	14
Green	13
Unique	12
Attractive	12
Friendly	11
Distinctive	9
Open	8
Clean	8
Inspiring	8
Harmonious	6
Imaginative	5
Fun	4
Serene	4
Refreshing	4
Personal	3
Community	3
Inclusive	2
Considered	2
Inviting	2
Picturesque	2
Dynamic	1
Enterprising	1
Indigenous	1
Contained	1
Inclusive	1
Diverse	1
Divided	1



Task 02 Results



Task 02 Results

## Task 02 Results

## Task 02 Results

## Task 02 Results

## Task 02 Results



**TASK 02**  
**THIS IS A SPECIAL PLACE**

Rank the one word descriptions for Loose as it is now to create a top ten list.

GREEN - CONSERVATION IN VILLAGE + INVITING - VISUAL  
 ATTRACTIVE - VISUAL, DESIRABLE PLACE TO LIVE, GOOD SCHOOL CHILDREN CENTRES  
 FRIENDLY - LOTS OF ORGANISATION  
 SAFE - COMPARED TO OTHER AREAS  
 UNIQUE - VALLEY, STREAM, ARCHITECTURE  
 IMAGINATIVE - LOTS OF ACTIVITIES

1st	GREEN
2nd	INVITING
3rd	ATTRACTIVE
4th	FRIENDLY
5th	SAFE
6th	UNIQUE
7th	IMAGINATIVE
8th	REFRESHING
9th	HARMONIOUS
10th	COMMUNITY SPIRIT

Task 02 Results

Rank the one word descriptions for Loose as it is now to create a top ten list.

1st	ATTRACTIVE (APART FROM PAPERMAKERS ARMS)
2nd	GREEN
3rd	DISTINCTIVE
4th	OPEN
5th	UNIQUE
6th	INSPIRING
7th	SAFE - LOW CRIME RATE - BUT NOT THE MAINROAD
8th	CLEAN
9th	FRIENDLY
10th	CONSIDERED

OSE NEIGHBOURHOOD PLAN  
 2014/15/16/17/18/19/20/21/22/23/24/25/26/27/28/29/30/31/32/33/34/35/36/37/38/39/40/41/42/43/44/45/46/47/48/49/50/51/52/53/54/55/56/57/58/59/60/61/62/63/64/65/66/67/68/69/70/71/72/73/74/75/76/77/78/79/80/81/82/83/84/85/86/87/88/89/90/91/92/93/94/95/96/97/98/99/100

Task 02 Results

Rank the one word descriptions for Loose as it is now to create a top ten list.

1st	Attractive
2nd	Green
3rd	Fun
4th	Open
5th	Clean
6th	Unique
7th	Dynamic
8th	Inspiring
9th	Friendly
10th	Safe

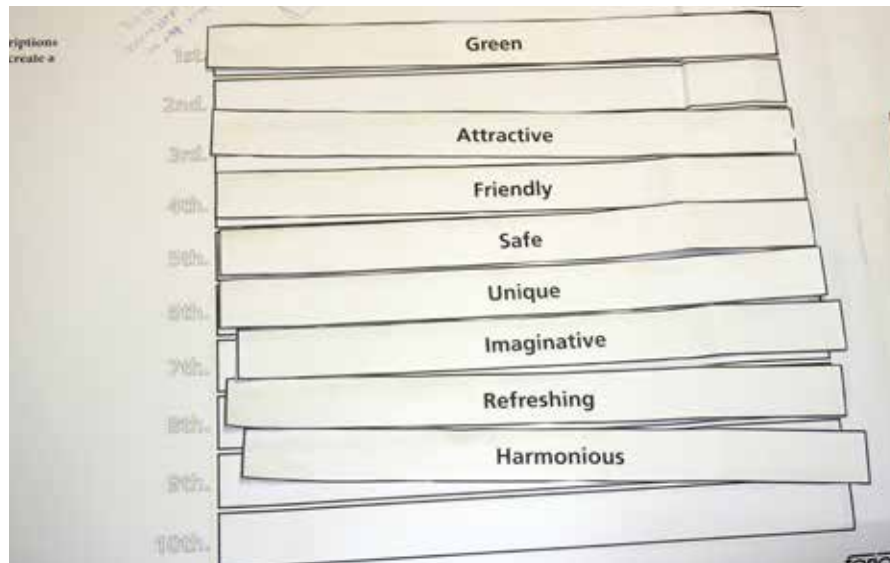
Task 02 Results

Rank the one word descriptions for Loose as it is now to create a top ten list.

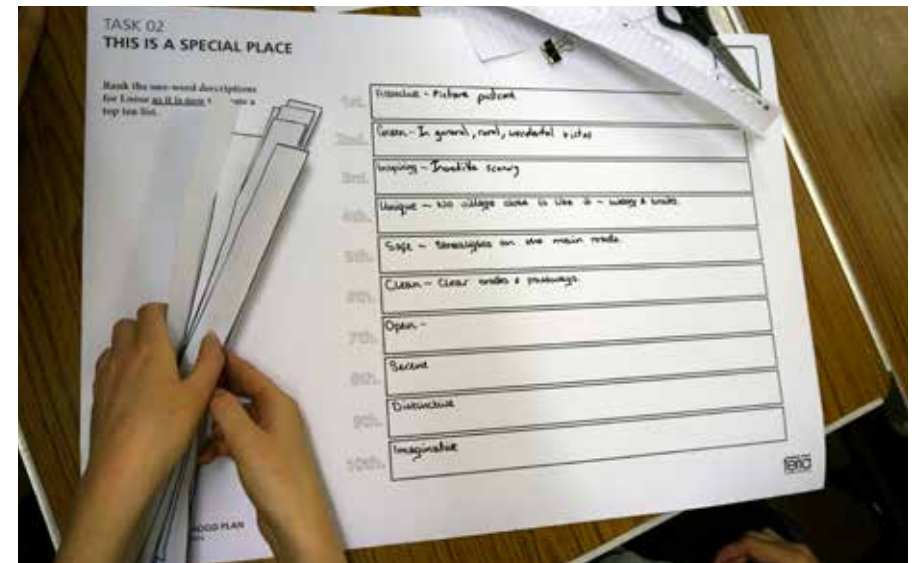
GREEN - CONSERVATION IN VILLAGE + INVITING - VISUAL  
 ATTRACTIVE - VISUAL, DESIRABLE PLACE TO LIVE, GOOD SCHOOL CHILDREN CENTRES

1st	GREEN
2nd	INVITING
3rd	ATTRACTIVE
4th	FRIENDLY
5th	SAFE
6th	UNIQUE
7th	IMAGINATIVE
8th	REFRESHING
9th	HARMONIOUS
10th	COMMUNITY SPIRIT

Task 02 Results

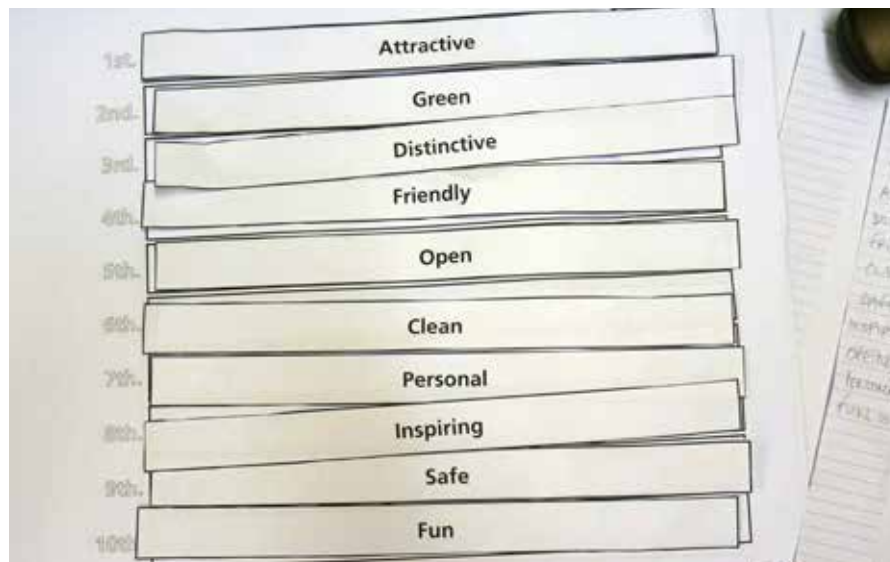


Task 02 Results

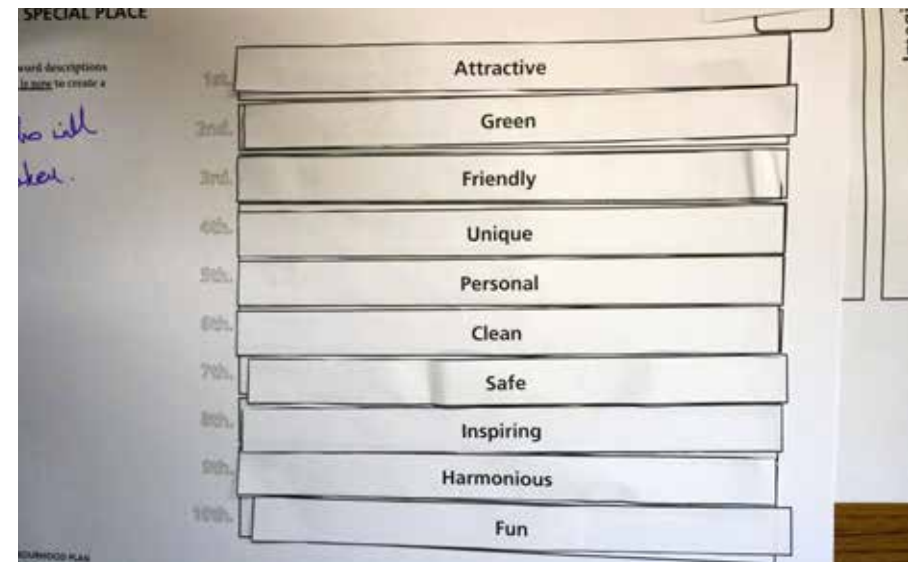


Task 02 Results

/ 21



Task 02 Results



Task 02 Results



**Task 03** Participants explore a preferred direction of growth

## TASK 03 — DIRECTION OF GROWTH

### Growth to the north east

There are worries of development in the north east area of the parish. Participants believe that this will cause more traffic problems, particularly on Borough Lane and Pickering Street, and it could cause an coalescence between Loose and Maidstone. Noise pollution, overlooking of existing properties and also a threat to the Conservative Area resulting in a loss of green space.

Some participants were open to compromise if new developments are sympathetic to Loose and its existing urban and rural forms. The north east area is highly visible as it is situated on top of the hill. Significant high density developments could spoil this area and obstruct views.

Other participants said there is potential for development in Boughton Monchelsea, in order to keep a “green wedge” between the two parishes, thus maintaining the existing fields currently used for orchards and crops but also creating a good area for informal recreation as it looks down into the valley.

## KEY GROWTH ISSUES

[ in no particular order ]

**ANY NEW DEVELOPMENT SHOULD RESPECT THE LOOSE PARISH.**

**NEW BUILDINGS SHOULD BE BEAUTIFUL AND CONTEXTUAL AND PARKING SHOULD BE CONSIDERED FOR EVERY HOUSE OR UNIT.**

**NO ROOM FOR NEW DEVELOPMENTS // RETAINING VILLAGE STATUS  
// NO SUBDIVIDING, THIS COULD EASILY ESCALATE // NO ROOM FOR  
BIG NEW ROAD NETWORKS OR NEW INFRASTRUCTURE.**



### Growth at centre of parish

There were a lot strong opinions against new development at the centre of the parish, along the stream as this is a Conservation Area that should be protected. There is also a view that there is insufficient road infrastructure, with many concerns about how an increase in traffic will be accommodated.

### Growth at south west

The majority of participants believed there is a possibility of housing developments in this area, as there is a school nearby and good access. Moreover, this area is not the “heart of the village” therefore, leaving the central area untouched. However, this site should only be developed if traffic impacts are considered carefully.

The Park + Ride concept in the south west was mentioned. Most people are against this idea as they believe it will not be effective, particularly during school holidays.

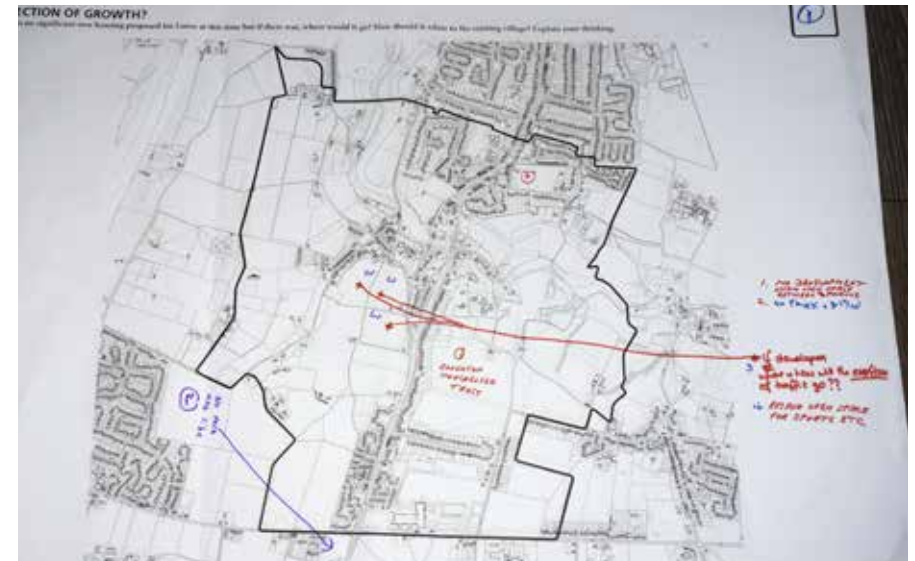


Task 03 Results

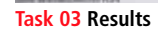
/ 23



Task 03 Results



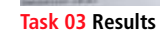
Task 03 Results







### Task 03 Results





## TASK 04 — PLACES YOU CHERISH, PLACES YOU DON'T

### PLACES TO BE PROUD OF

This task revealed a correlation of the green dots. This shows there is a sense of pride and some commonplace positive opinions about specific places. The majority of open spaces and fields were selected at least once for a green dot. Small groups of green dots could be identified along the valley and in the Conservation Area. These were backed up with comments relating to the wildlife, natural beauty, heritage and attractive buildings. Individual dots outside of the boundary were placed on the wall at Hayler and churches, that were described as peaceful.

### PLACES THAT COULD BE BETTER

As with the green dots, most of the red dots (used to identify negative places) also tended to cluster in specific places. These were common to all groups. One of these was the A229, particularly in the north of the parish near the primary school. Dots were accompanied by words such as “traffic”, “congestion” and “unsafe”. Another cluster was located in the south, used to express disapproval for a park and ride proposal. A couple of dots were placed on the village green stating that there is limited parking and that it fails to work as a social space. Also, there were some individual dots labelling poor pavements and vehicle weight restrictions. Dots placed outside the boundary were either at road junctions and areas that are not considered complementary to the heritage architecture found within the parish.

### EXAMPLE LIKES

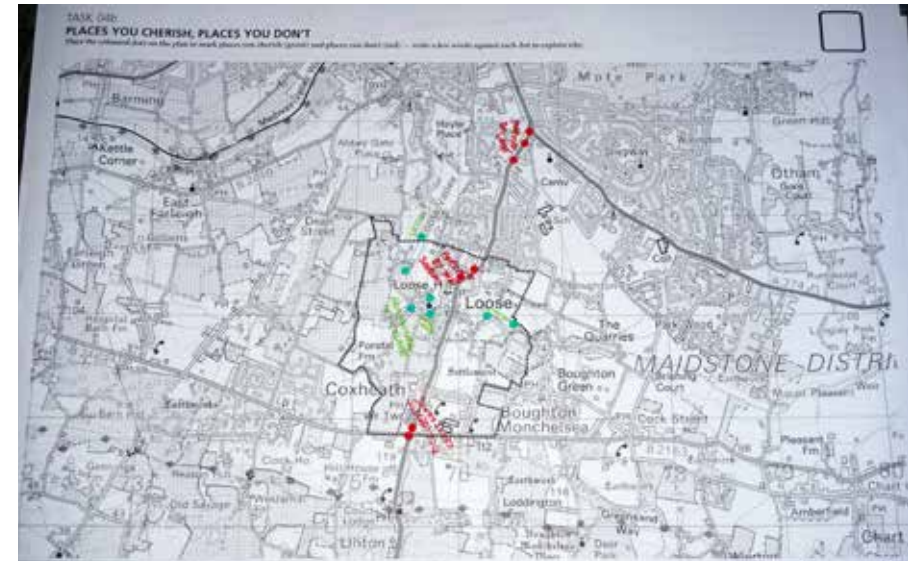


CONSERVATION AREA //  
THE VALLEY // ORCHARDS //  
HERITAGE BUILDINGS WITHIN  
THE CONSERVATION AREA //  
SWISS VALLEY // GOOD JUNIOR  
SCHOOL // NATURAL BEAUTY //  
GOOD FOOT PATHS.

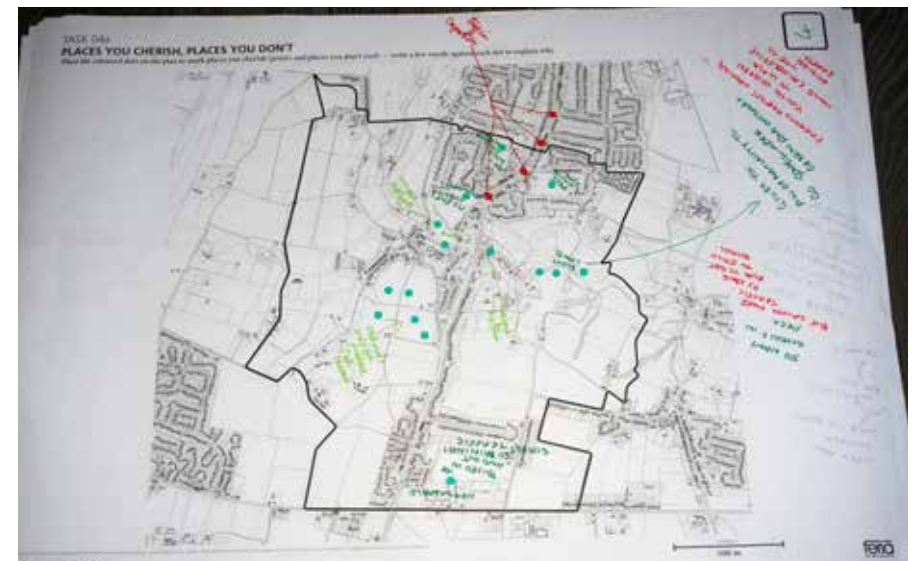
### EXAMPLE DISLIKES



TRAFFIC CONGESTION //  
SPEED // PARKING AROUND  
VILLAGE GREEN // RAT-RUNS //  
ROAD JUNCTIONS // UNEVEN  
PAVEMENTS // OVERGROWN  
FLORA // ALLEYWAYS AND  
NARROW PAVEMENTS.



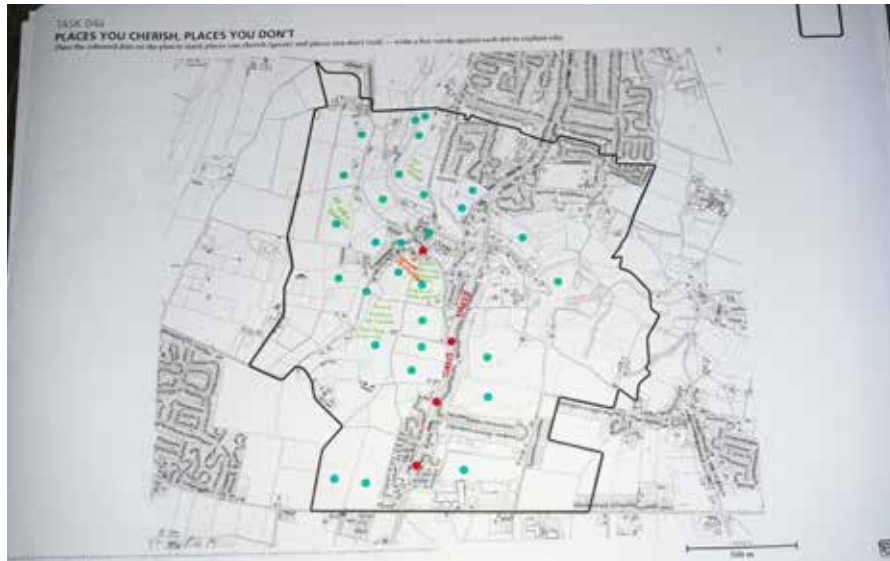
Task 04 Results



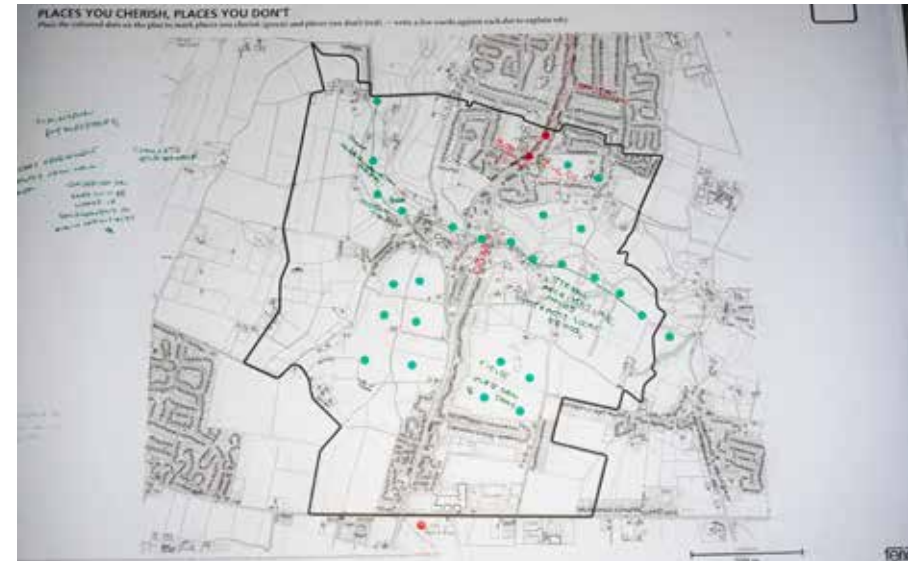
Task 04 Results



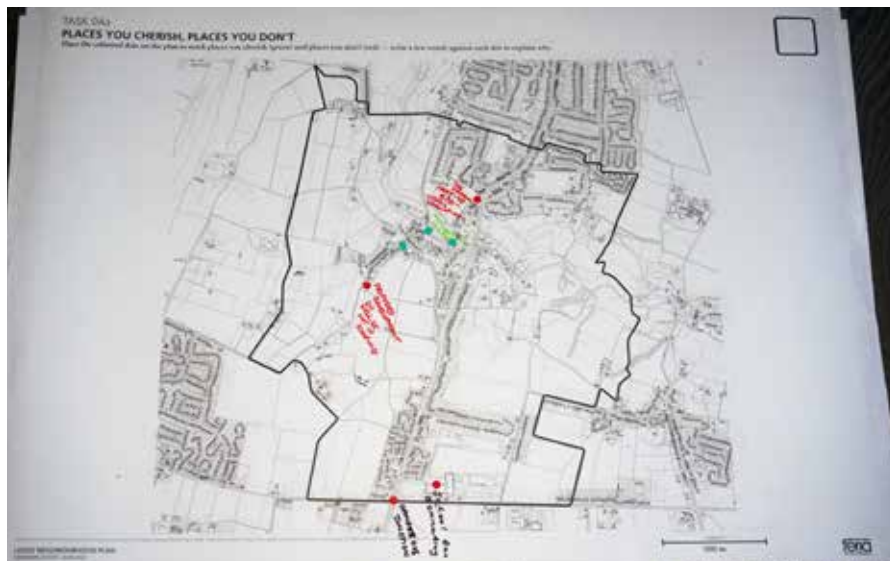




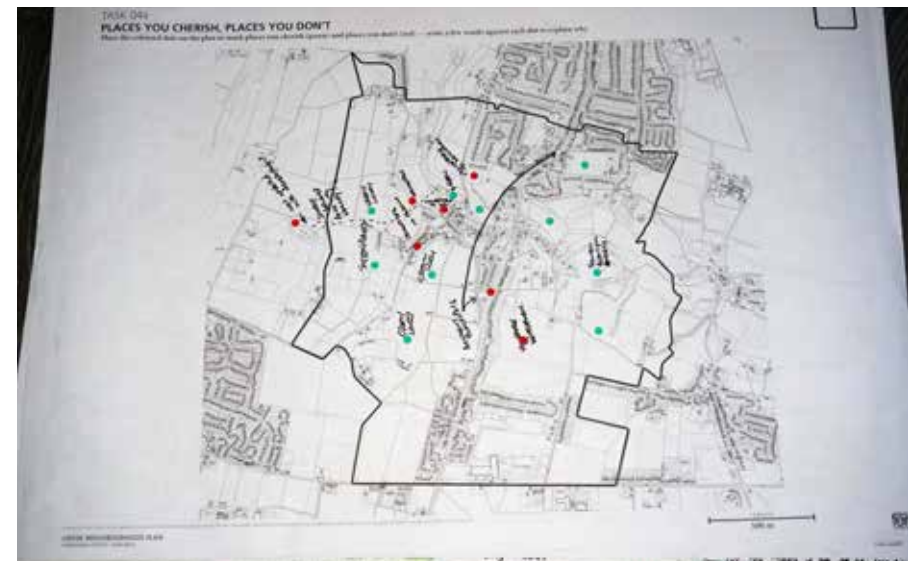
Task 04 Results



Task 04 Results



Task 04 Results

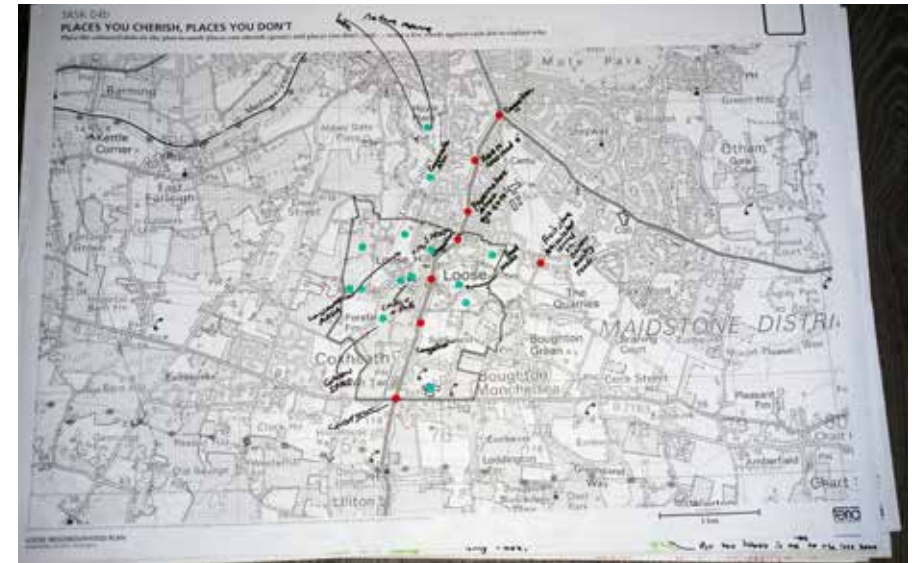


Task 04 Results



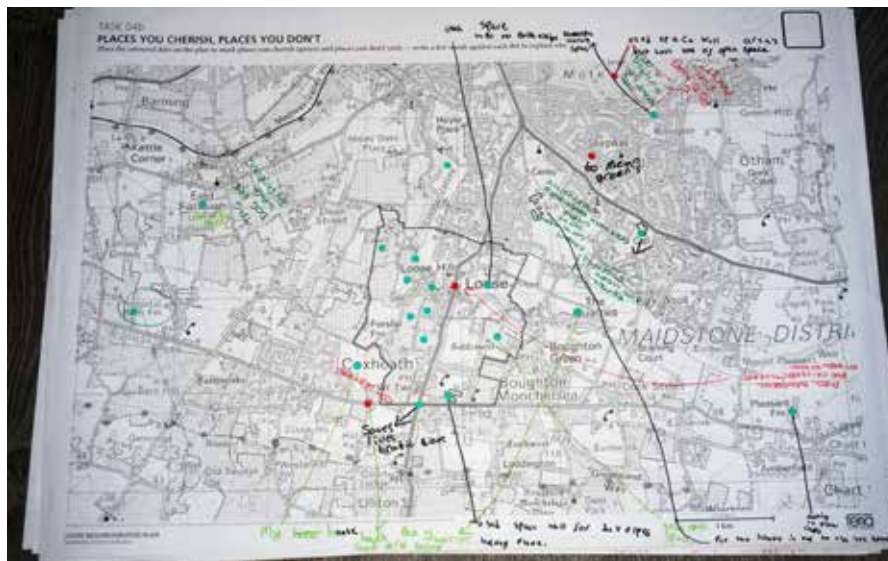


Task 04 Results

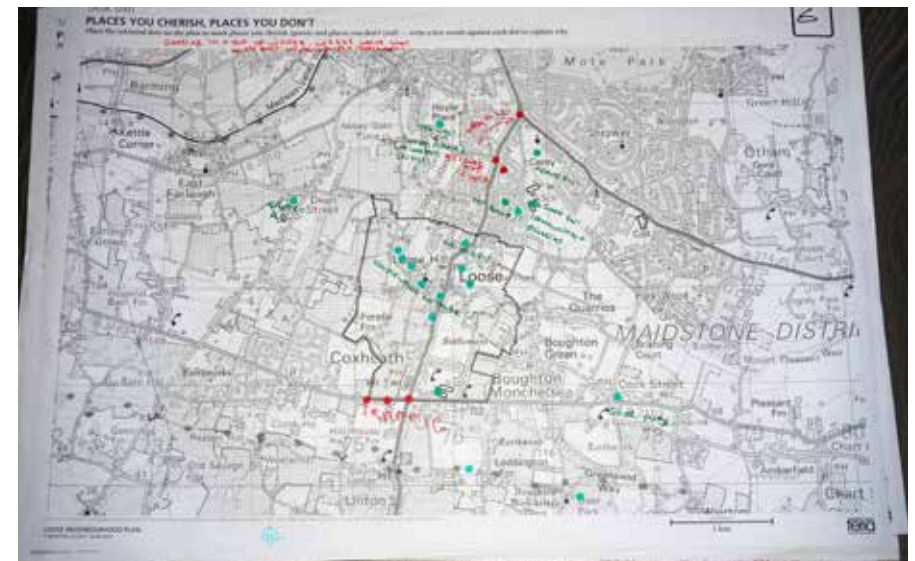


Task 04 Results

/ 29

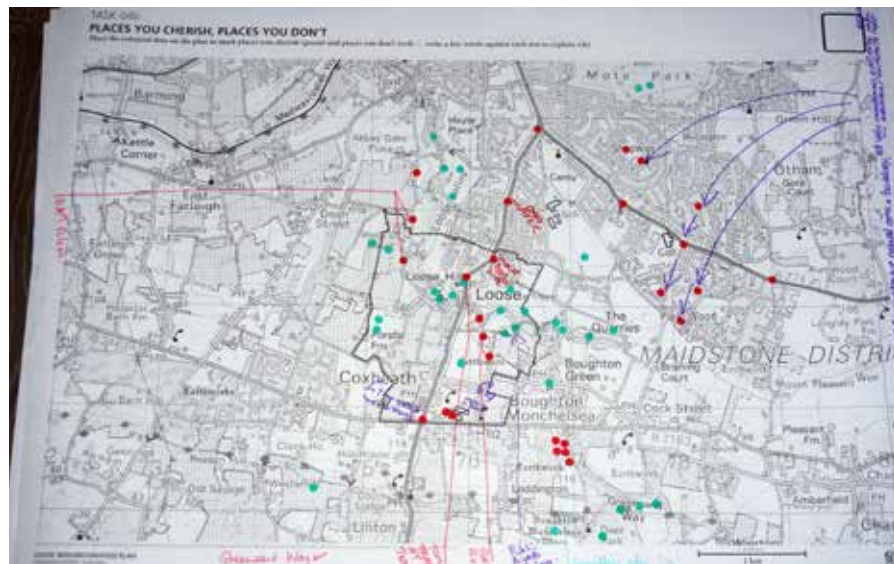


Task 04 Results

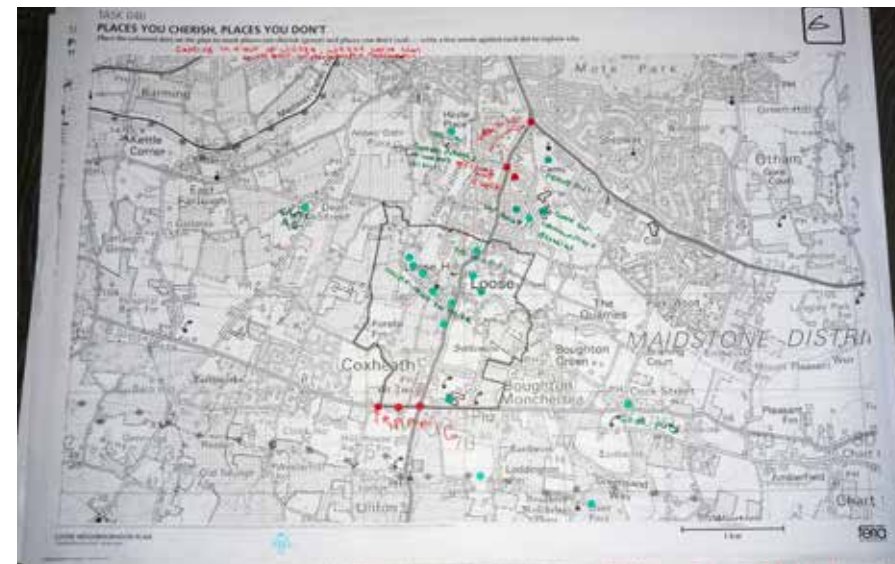


Task 04 Results

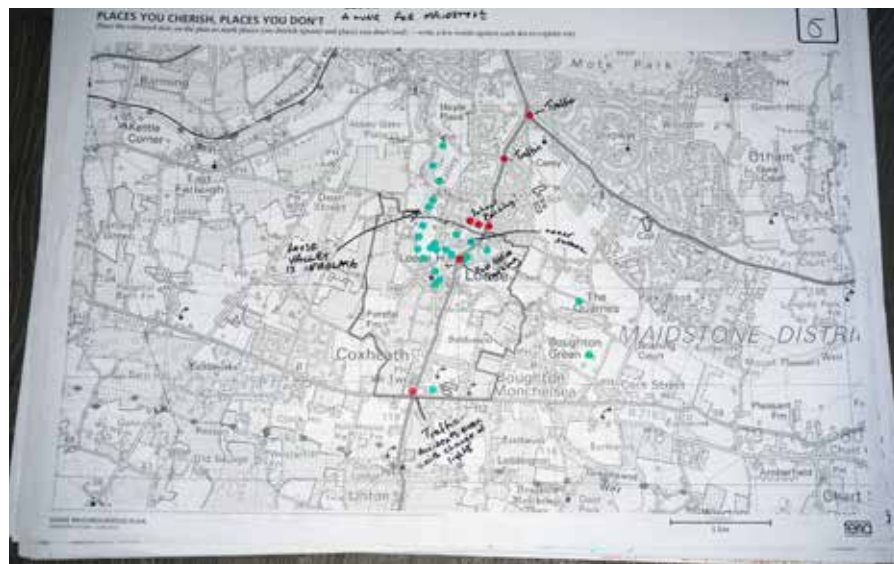




Task 04 Results



Task 04 Results



Task 04 Results



Task 04 Workshop participants identify the places they cherish the most

TASK 05 — MAIN CHALLENGES

The words **COUNTRYSIDE PROTECTION**, **TRAFFIC**, **HOUSING GROWTH** and **ARCHITECTURAL QUALITY** were the four most popular choices to describe the key challenges facing Loose.

MOST LIKELY CHALLENGES AHEAD?

TOP TEN ISSUES

- Countryside Protection
- Traffic
- Housing Growth
- Architectural Quality
- Health Services
- Schools + Education
- Shops
- Access to Recreational Land
- Non School Youth Opportunities
- Opportunities for Seniors + Retired

LEAST LIKELY CHALLENGES AHEAD?

MENTIONED ONLY ONCE, TWICE OR THREE TIMES

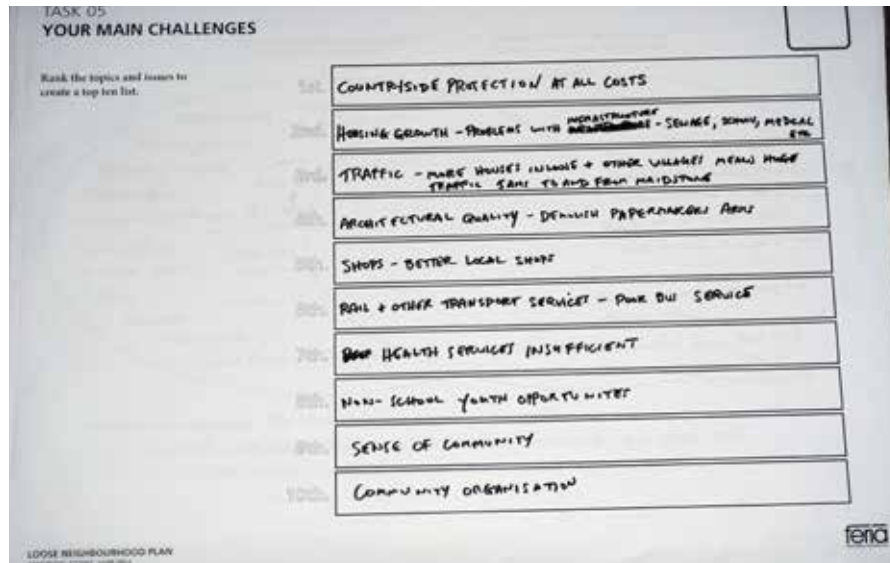
- Town Squares + Civic Spaces
- Dog Mess
- Community Organisation + Structure
- Employment Space (from home)
- Enhanced bus services
- Rail Services

Chosen Word

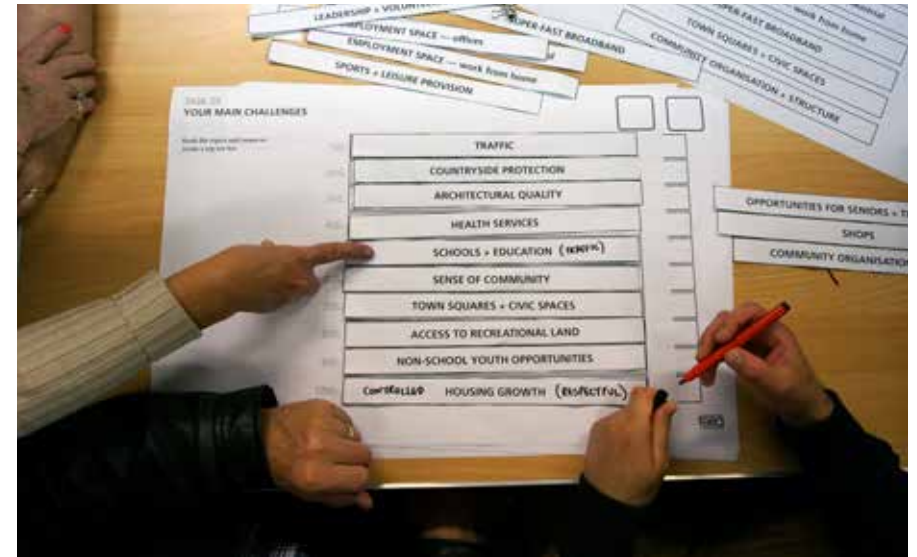
No. of Appearances

Countryside Protection	17
Traffic	16
Housing Growth	16
Architectural Quality	16
Health Services	14
Schools + Education	14
Shops	12
Access to Recreational	9
Non-School Youth Opportunity	9
Opportunities for Retired	9
Superfast Broadband	9
Sense of Community	8
Sports + Leisure Provision	6
Leadership + Volunteering	5
Employment Spaces (workshop/industrial)	4
Town Squares + Civic Spaces	3
Dog Mess	3
Community Organisations	3
Employment Spaces (from home)	2
Enhance Bus Services	2
Rail Services	1

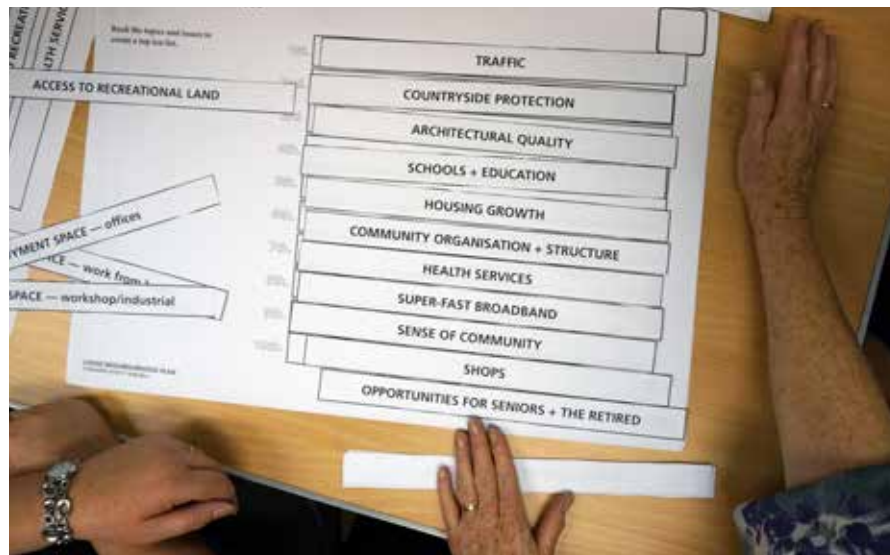




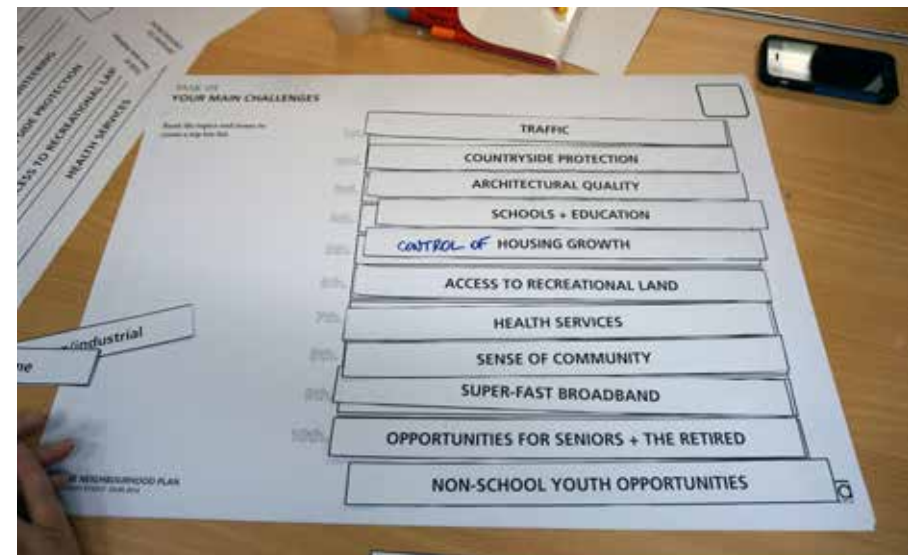
Task 05 Results



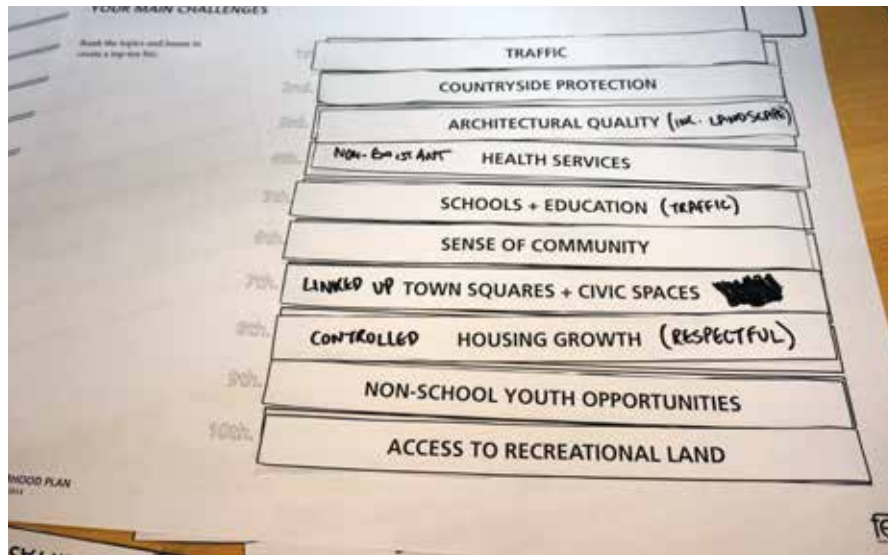
Task 05 Results



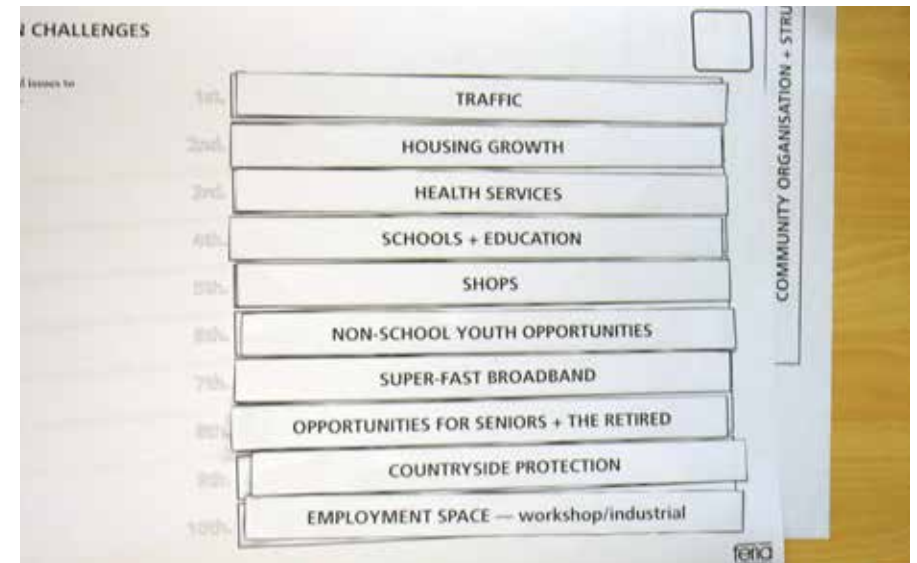
Task 05 Results



Task 05 Results

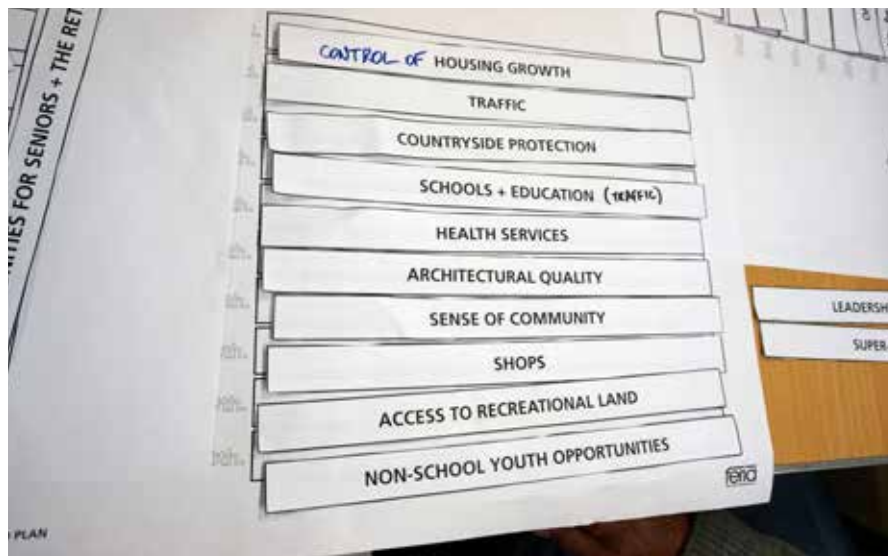


Task 05 Results



Task 05 Results

/ 33

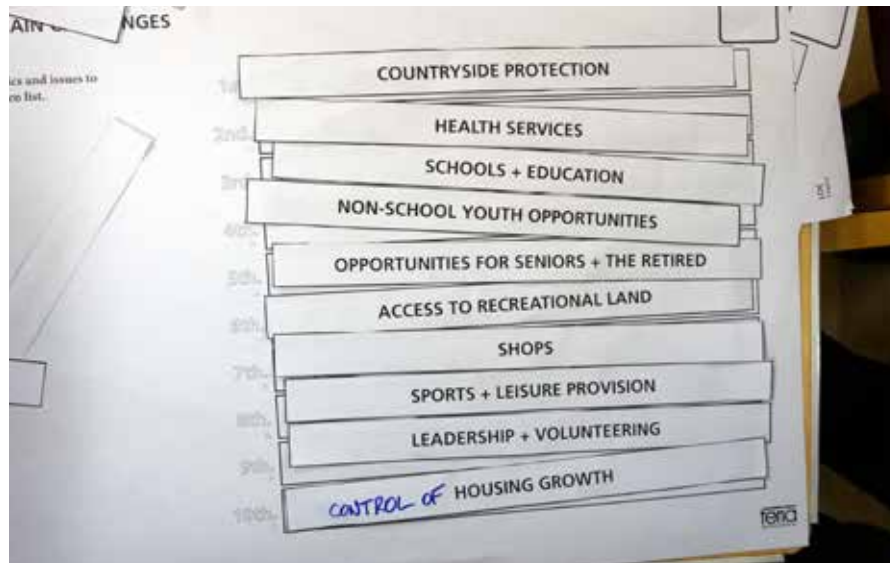


Task 05 Results

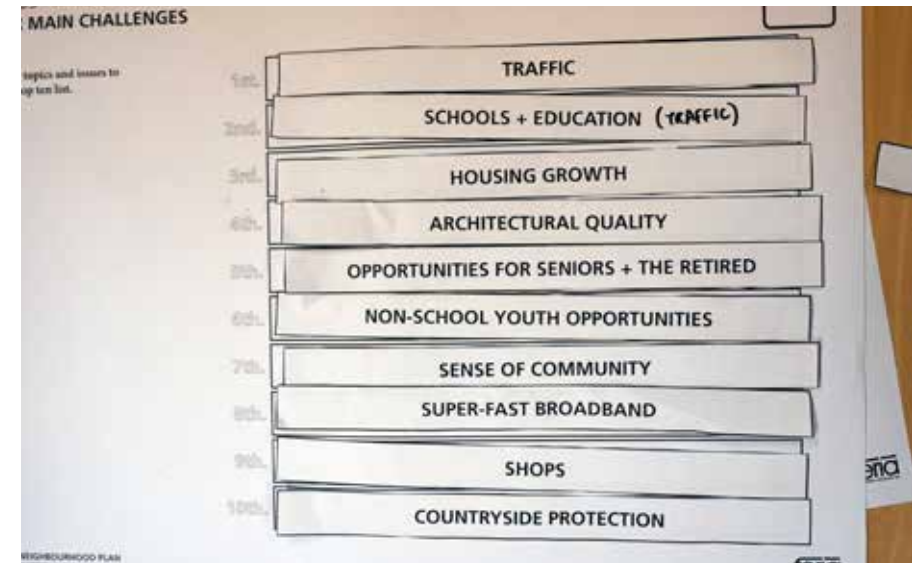


Task 05 Results

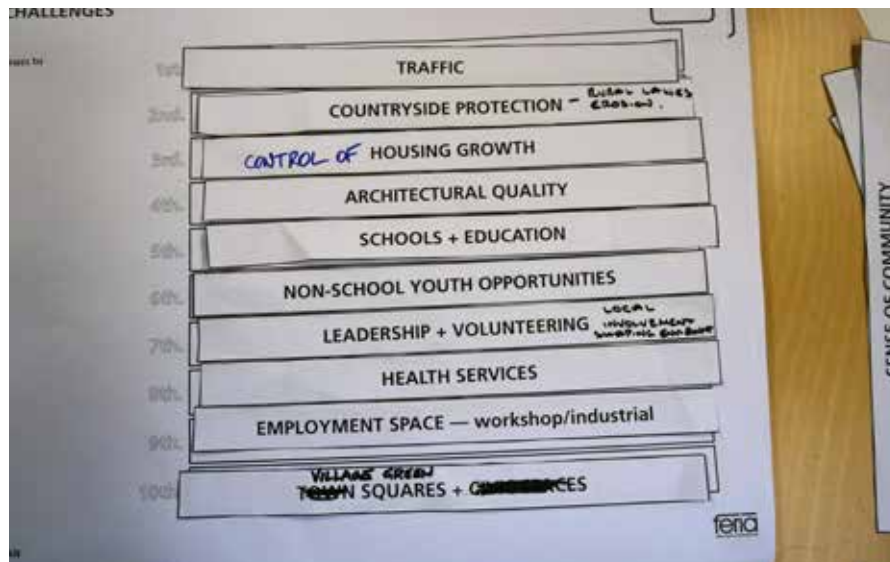




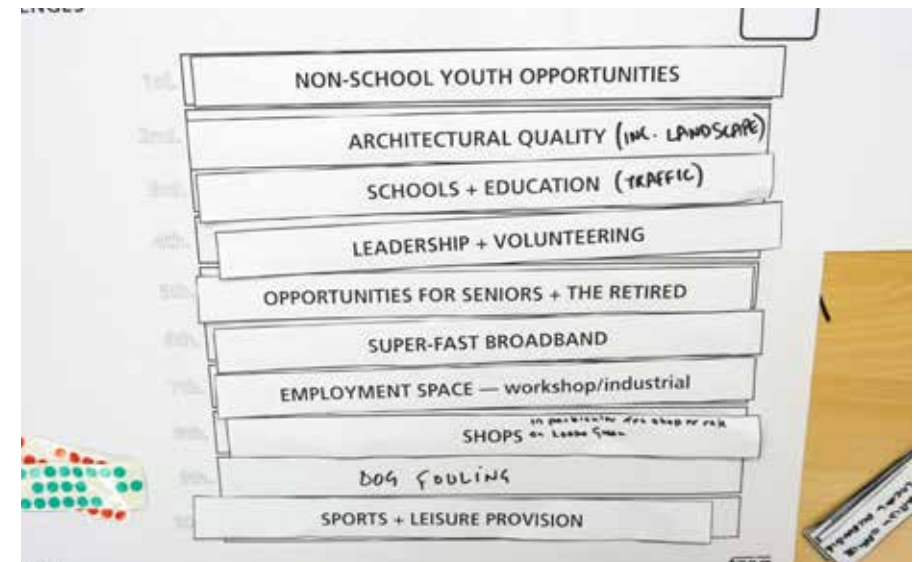
Task 05 Results



Task 05 Results

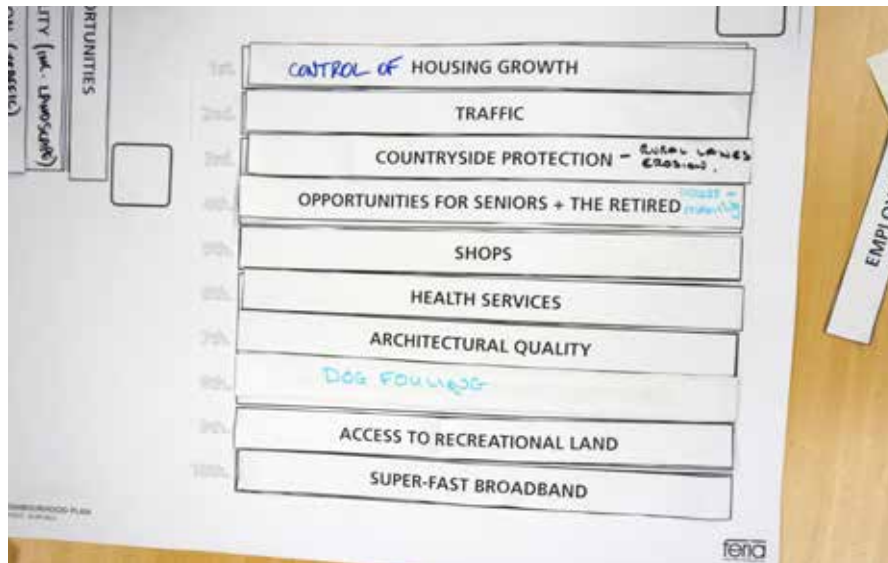


Task 05 Results

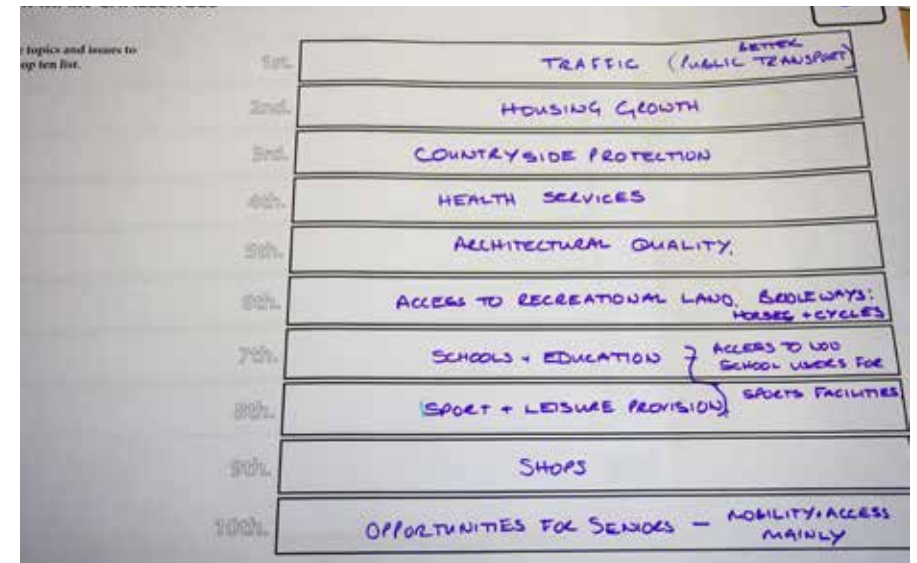


Task 05 Results



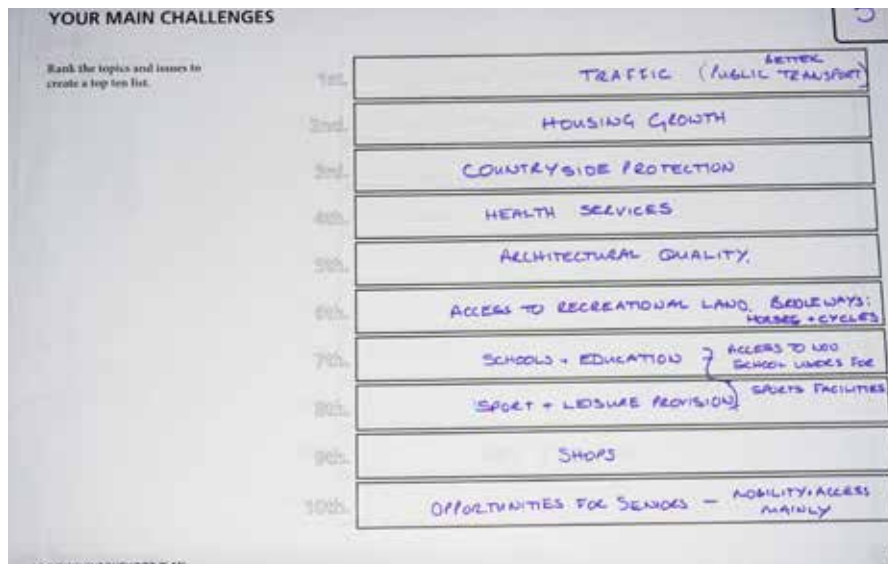


Task 05 Results

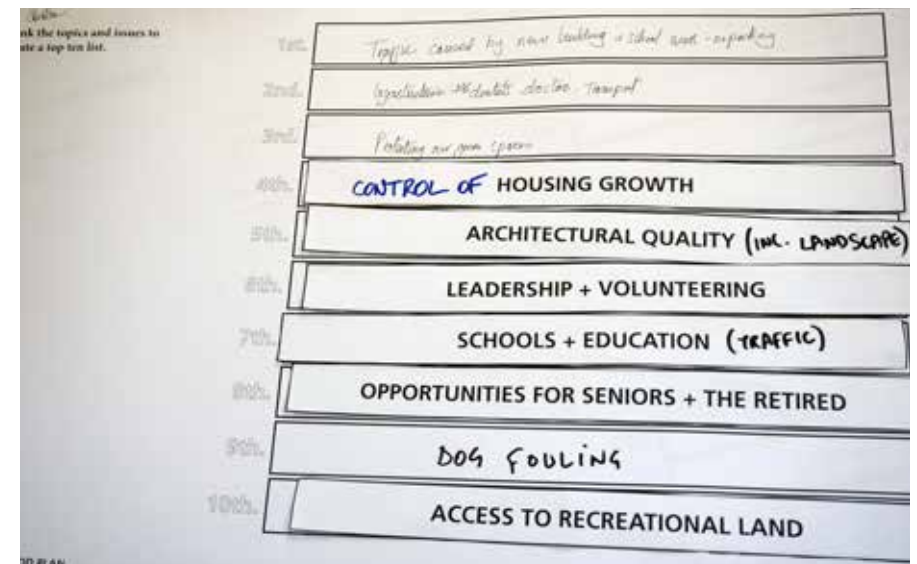


Task 05 Results

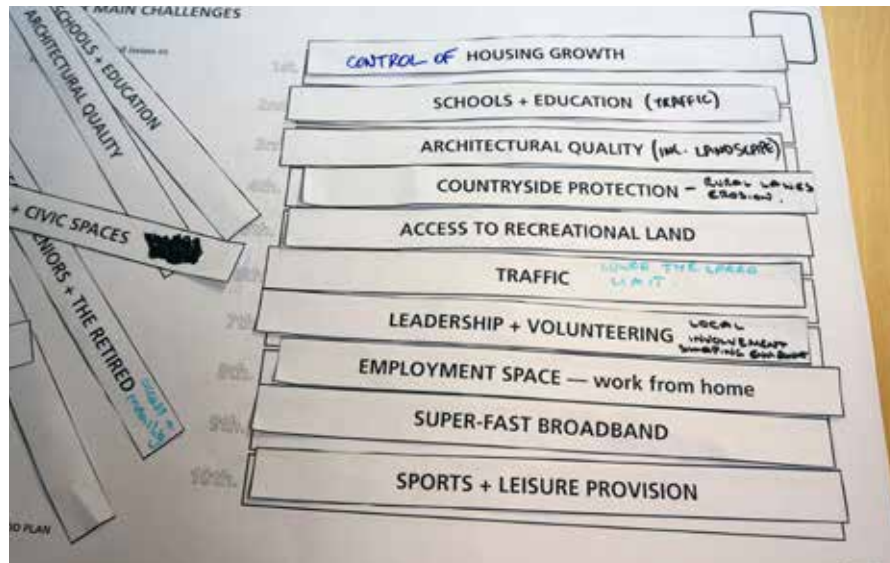
/ 35



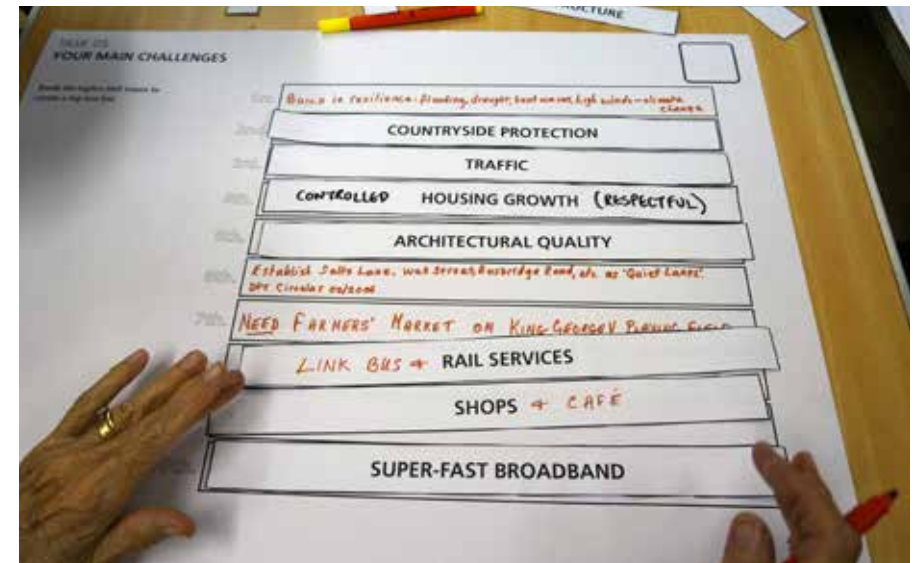
Task 05 Results



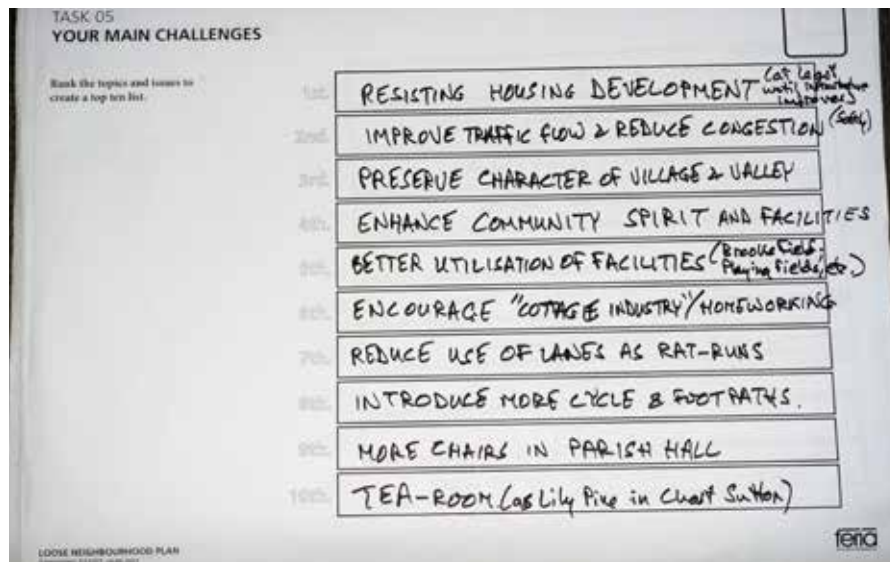
Task 05 Results



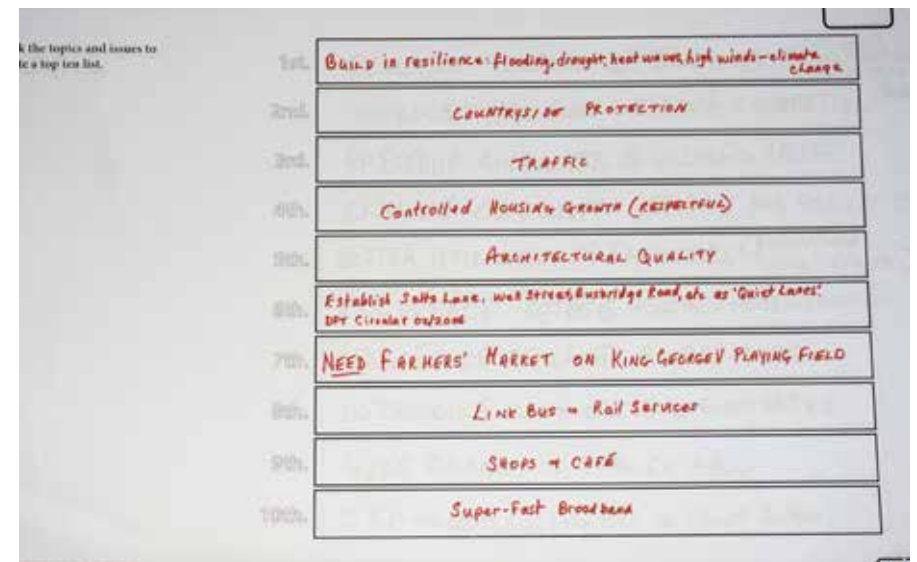
Task 05 Results



Task 05 Results



Task 05 Results



Task 05 Results



10 topics and issues to top ten list.

1st.	Traffic caused by new building + school zone - parking
2nd.	Integration + Migration + Social + Transport
3rd.	Problems with space
4th.	Leadership +
5th.	
6th.	
7th.	
8th.	
9th.	DOG FOULING
10th.	

Task 05 Results



Task 05 Participants discuss their choices



Task 05 Participants identify the main challenges





**Task 06** Participants explore access + movement issues

## TASK 06 — STREETS, SPACES + LANES

### A229 LINTON ROAD

The A229 Linton road can be described as a “spine street” that slices through the centre of Loose Parish. Many concerns were related to peak-time traffic congestion and traffic speeds. Participants said that there is a large amount of traffic and congestion along the A229 during school drop-off and pick-up times. It is particularly busy towards the north of the parish where the school is.

This congestion is a deterrent to cycling and walking whereby people feel that the road is too dangerous, especially for young children. There is link — parents feel it is unsafe for young children to walk and so choose to drive to the school, thereby contributing towards the traffic congestion. All the school-runs shown in the task sheets use the A229 for at least part of the route.

Other comments state that traffic tends to speed along the A229 outside of peak hours suggesting that the road is dangerous at all times of the day. There are also traffic lights on the southern boundary of the parish, with some comments suggesting these only contribute towards traffic problems. A small minority of comments mentions a poor bus route with bus stops in a poor location.

### KEY MOVEMENT ISSUES

[ in no particular order ]

**LACK OF BRIDAL WAYS // SPEED OF VEHICLES ALONG A229 // CONGESTION DURING PEAK TIMES // NARROW ROADS // NO CUT-THROUGH ROUTES FOR CYCLISTS // ALTERNATIVE ROADS ARE TOO WINDY, NARROW AND TOO MANY PEOPLE SPEED ALONG THEM // BUS SERVICES CONSIDERED TO BE POOR // SAFETY ON COUNTRY LANES**

## BUSBRIDGE ROAD

The result of the task showed that a high proportion of people use Busbridge Road to avoid school traffic when travelling to work. This route passes the industrial state and eventually connecting to the A20. Each time Busbridge Road was mentioned, there was always a comment mentioning how drivers have to be wary as the road is narrow and a lot of people tend to travel at high speed. There were some mentions of installing an enforceable speed limit.

## FOOTPATHS

Some lanes were highlighted as being suitable for cyclists and horse-riders but then labeled with negative comments saying traffic travels too fast and the lanes are too narrow, making it too dangerous to use. This includes Busbridge Road. Some negative views states there is only one bridleway for equestrian use.

Besides this, the footpaths are generally positive for pedestrians except where they cross over the A229. This is due to factors such as the adjacent vegetation needing to be cut back and maintained, pavements need improvements and that it can be hard to cross the road. The main footpaths that are frequently used are those around the Conservation Area and around Swiss Valley. There are also good quality recreational footpaths outside the parish in the Coxheath and Boughton areas.

## OTHER ROUTES

There are a other routes that travel out of the parish that people use to avoid the A229. However, drivers should be wary because the roads are twisty and not suitable for regular use. This includes the direct route to the big supermarket (Morrisons) that a lot of people tend to use. Some lanes are prone to “rat-runs” such as Salts Lane to Cornwallis, Busbridge Road and some narrow lanes through the Conservation Area. These narrow lanes were also marked with statements to say that vans and lorries should not be permitted to use them. As a cyclist, there are few routes that cut-through to the different areas without using the A229 at some stage, where there are no cycling provisions.

## THE BIGGER PICTURE

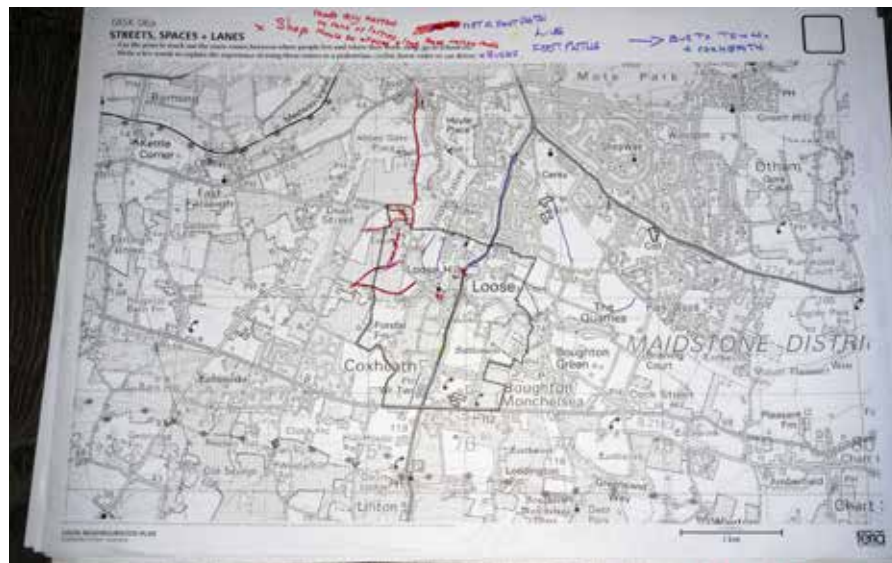
The strategic location of Loose relative to the Maidstone urban area, has a direct impact on the volume of traffic passing through the village. The A229 is a primary route between Maidstone and the south coast. Conflicts occur where footpaths cross the A229 and along routes which are being used to avoid traffic congestion hotspots, especially at peak times.

The lack of dedicated cycling provision and poor quality pavements only contributes towards the high volumes of traffic. Workshop participants expressed their concerns at how the neighbourhood plan would be able to address such access and movement issues originate outside the plan boundary.



Workshop participants discuss their ideas in groups





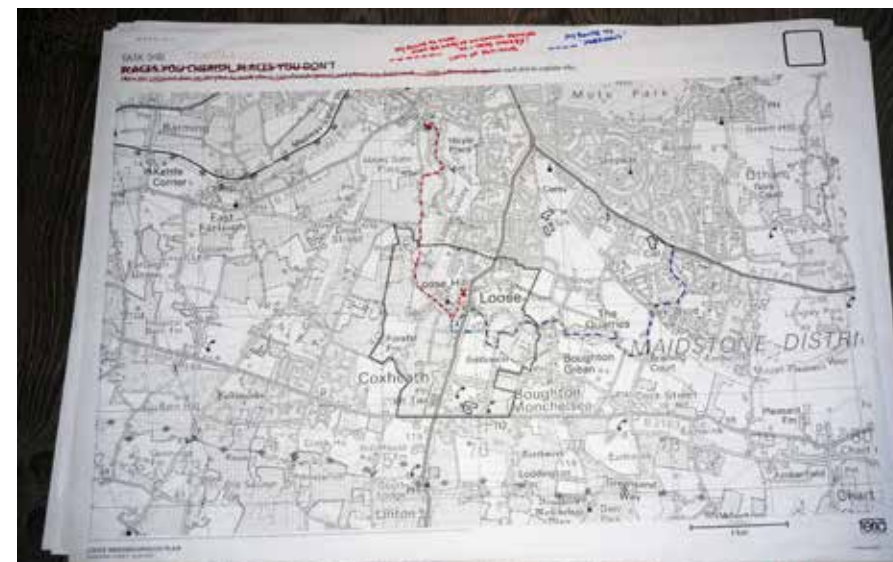
Task 06 Results



Task 06 Results

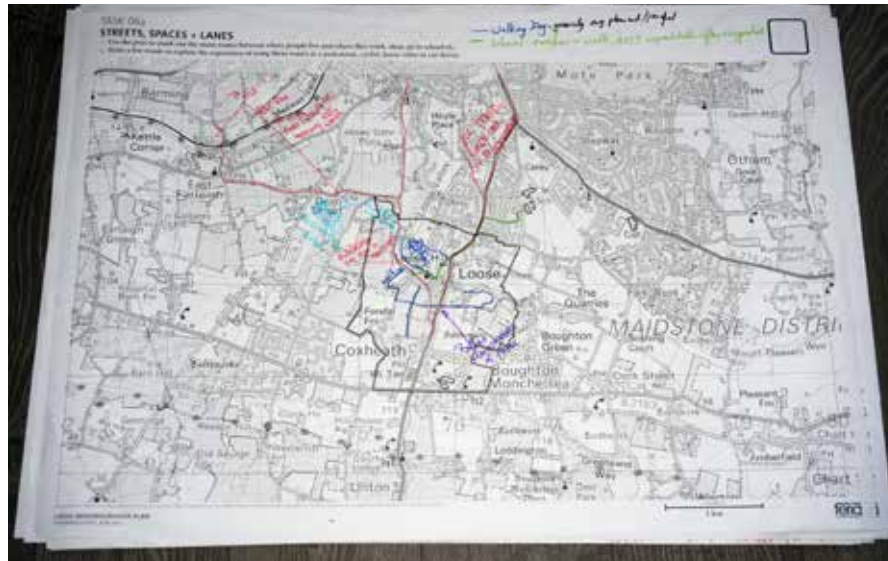


Task 06 Results

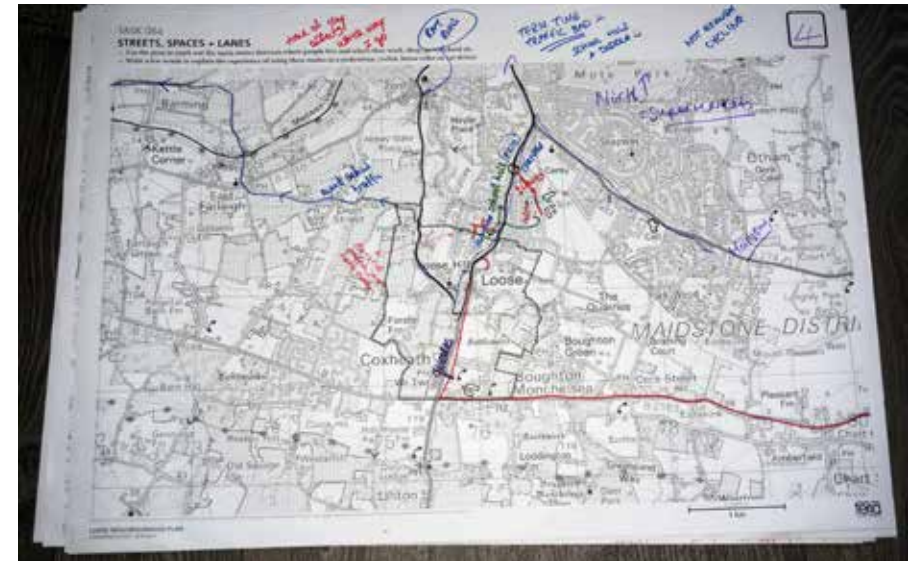


Task 06 Results





Task 06 Results

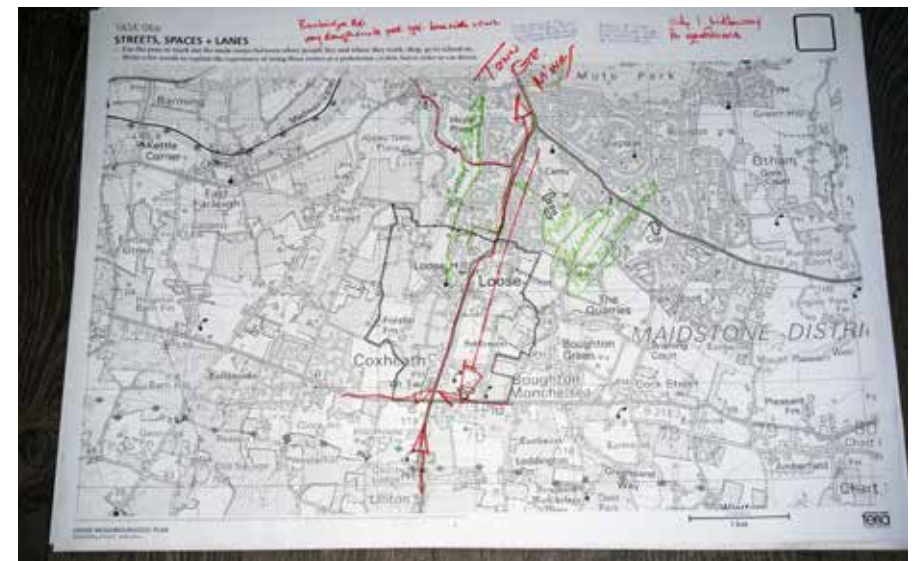


Task 06 Results

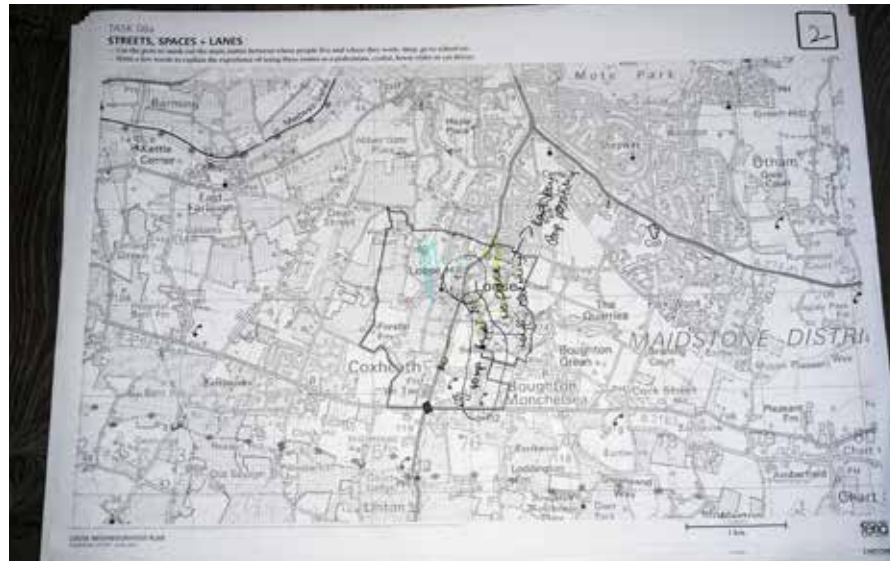
/ 41



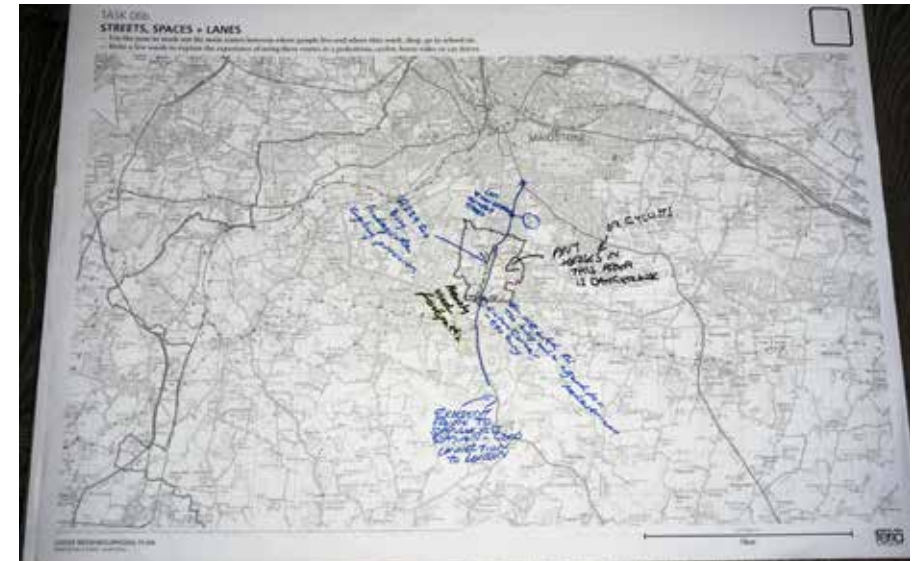
Task 06 Results



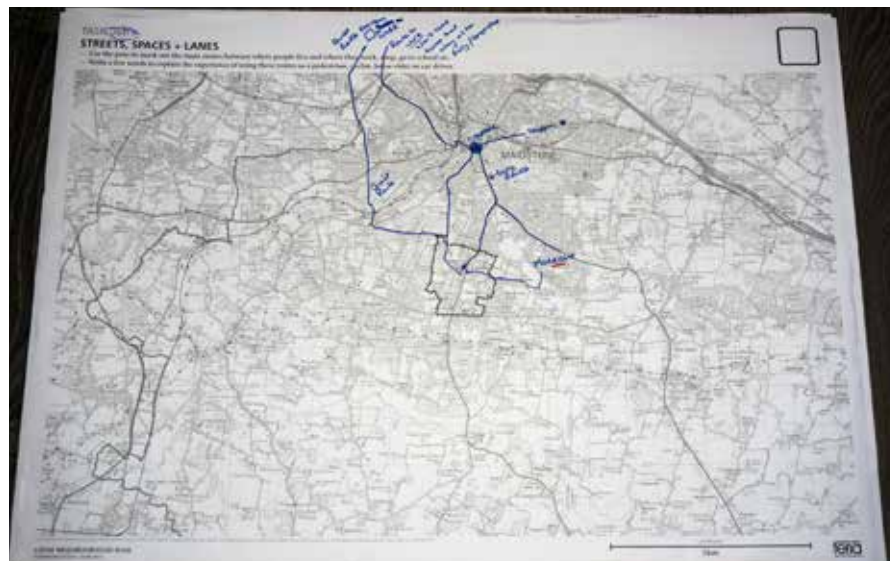
Task 06 Results



Task 06 Results



Task 06 Results

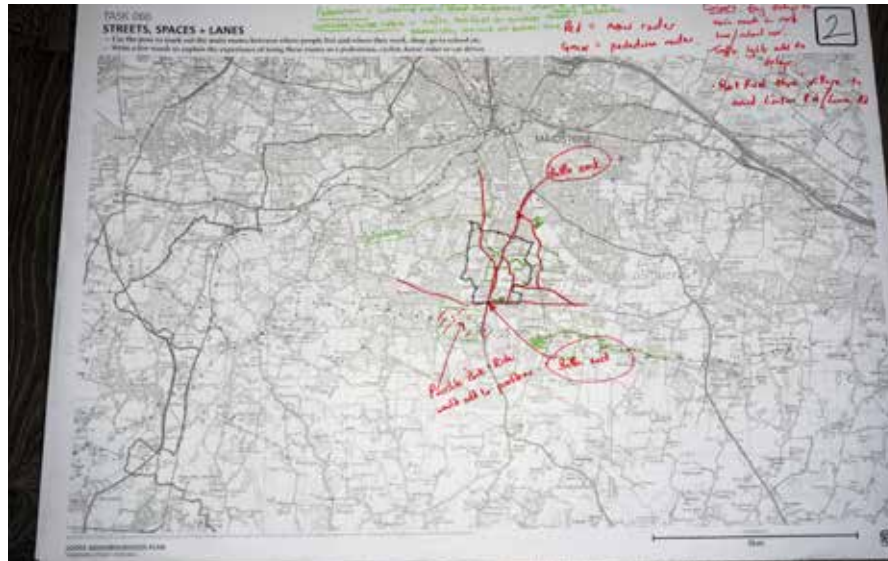


Task 06 Results



Task 06 Results





Task 06 Results

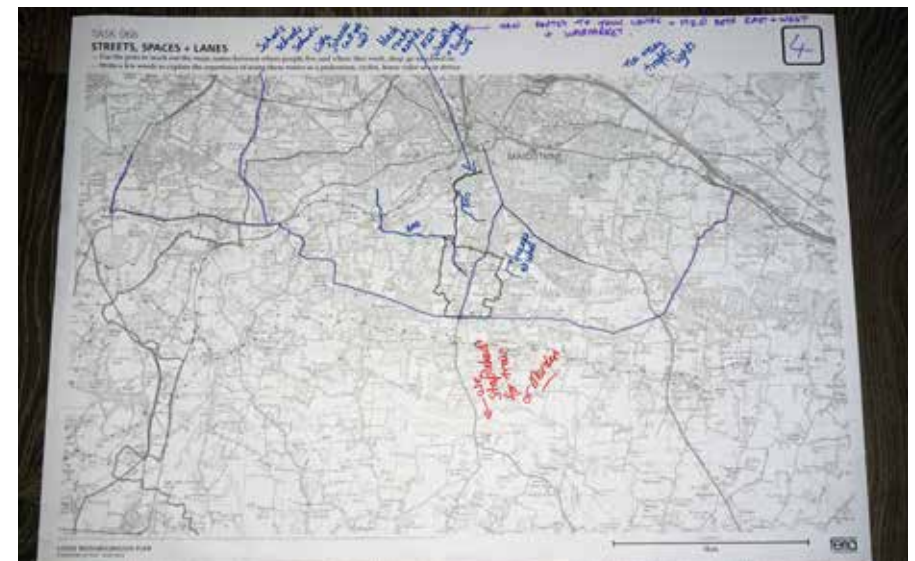


Task 06 Results

/ 43

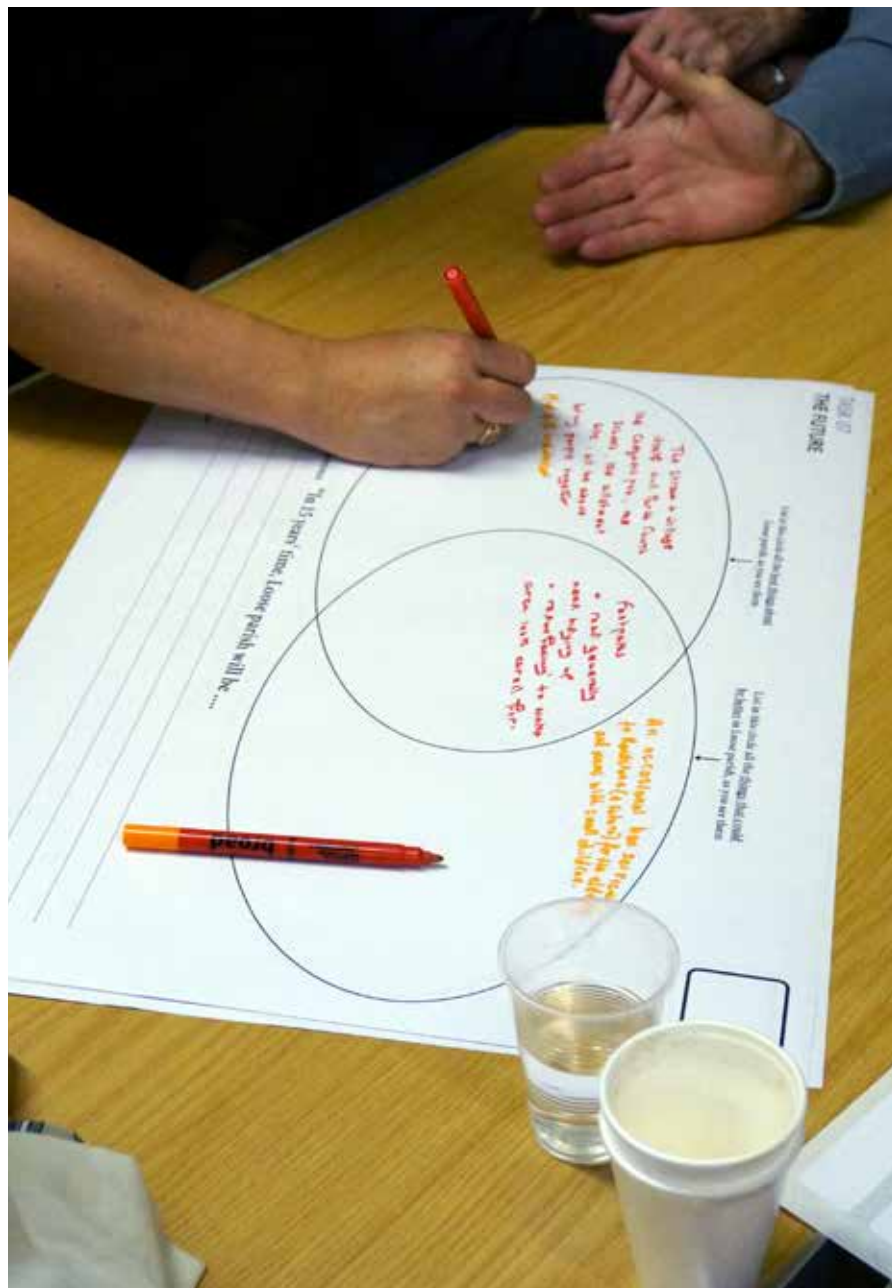


Task 06 Results



Task 06 Results





**Task 07** Participants explore the strengths of Loose parish

## TASK 07 — THE FUTURE

### BEST THINGS ABOUT LOOSE

#### 10 mentions

Green Open Spaces

#### 6 mentions

Loose Valley // Leisure Footpaths // Post Office // Allotments // Pub // Sense of Community

#### 5 mentions

Historic buildings + Quality Architecture // Schools // Stream //

#### 4 mentions

Church

#### 3 mentions

Good Bus Route

#### 2 mentions

YMCA // Viaduct // Quiet // Local Petrol Station

#### 1 mention

Low Crime Rates // Low Housing Density // Nursing Home // Local Barbers // Play Areas inc. King George V Field // Village Hall + Community Centre

## THINGS THAT COULD BE BETTER IN LOOSE

### 10 mentions

**Traffic**

### 9 mentions

**Parking**

### 4 mentions

**Sundays, Evenings and Elderly Bus Service // Litter //**

### 2 mentions

**Enclosed area for dogs in park // Introduce cycle lanes // Village hall and Community Centre // Medical facilities //**

### 1 mention

**Amenities // No pre-school // Post office // King George V Skate Park // Play areas inc. King George V // Control of social housing // Shops - could have a farm shop and tea room // The narrow roads // Street lighting // Footpaths - Improved pavements and keep them maintained // Access to motorways // Post office // Historical buildings & quality architecture**

## THINGS THAT FELL INTO BOTH CATEGORIES

The six things that fell into both of these categories and can be labelled as “the best things about Loose that could be improved” are:

1. **Post Office**
2. **Shops** — Could we have a farm shop and tea room?
3. **Play Areas** — inc. King George V Field
4. **Footpaths, Improved Pavements** — Need to be kept maintained!
5. **Village Hall + Community Centre**
6. **Historic Buildings + Quality Architecture**

## CONCLUSIONS

The post office is something that is used by the majority of residents on a regular basis. Although residents enjoy having a post office, they feel it could be improved further. This could include longer opening times and a lick of paint!

/ 45

Although the shops are generally considered good, there is a lack of variety. Participants suggested that Loose could benefit from a farm shop or tea room. These could also provide a choice of a social places to meet.

The King George V Field was seen as both a park and a playing field. Most thought it was great but many feel it is targeted at younger children instead of teenagers. It needs more activities but is considered a positive thing, as it is the only “park” in the parish.

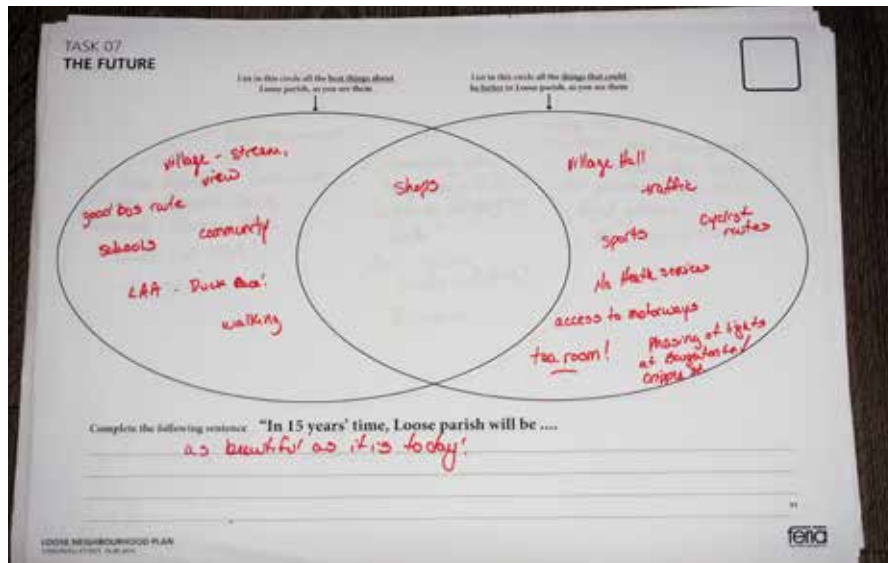
The majority of recreational footpaths are beautiful and picturesque but could benefit from better maintenance in some areas. For example, they are overgrown plants and with poor quality surfaces.

Although the pavilion is good, it is often too small for bigger events.

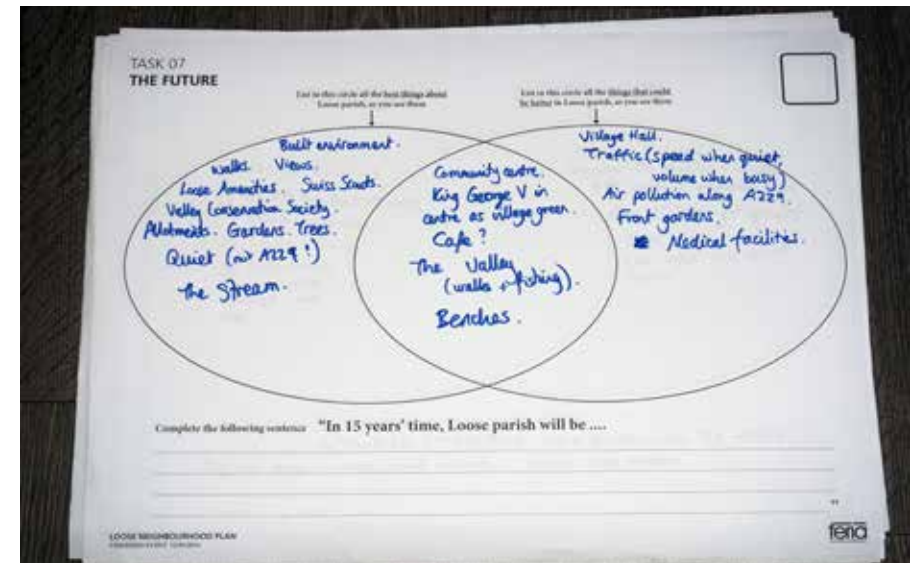
Loose has a reputation for historic and beautiful architecture but there is a worry that this could be spoilt by unsympathetic new housing developments.





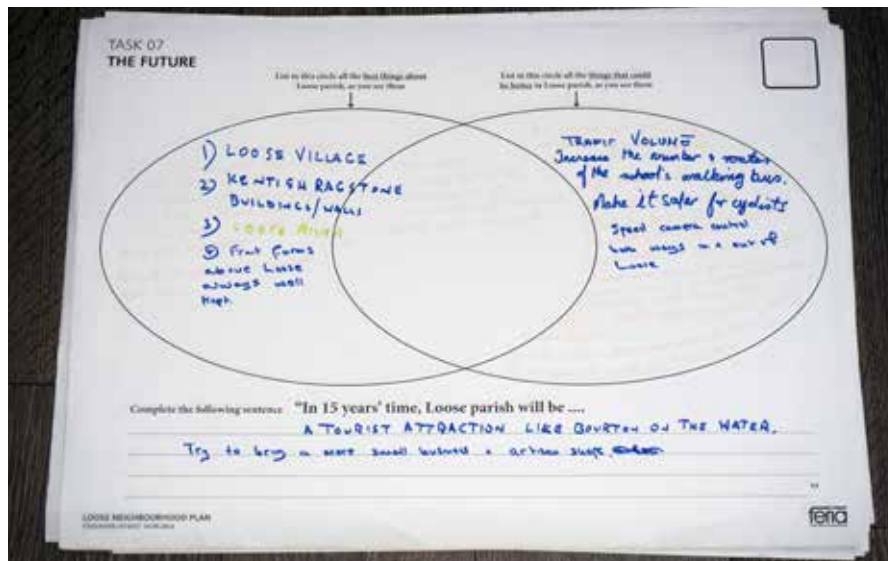


Task 07 Results

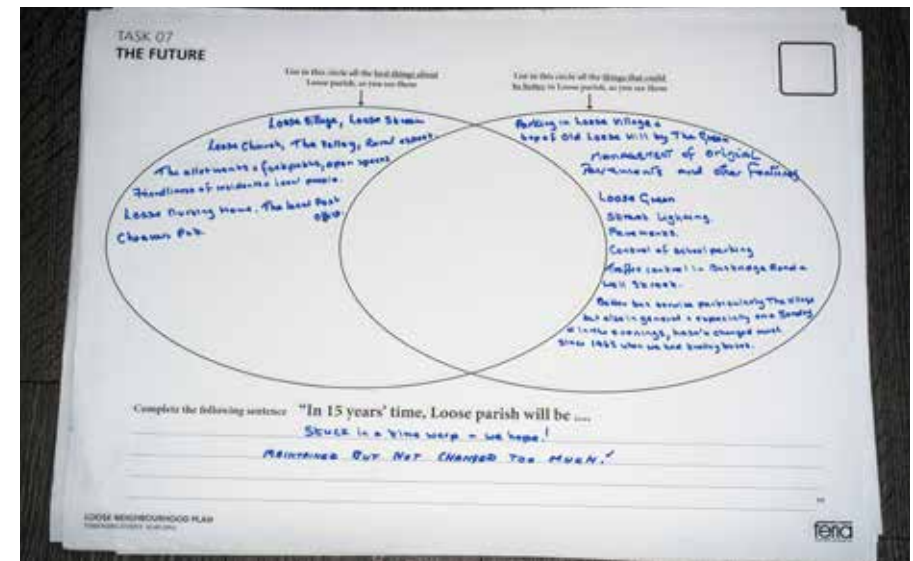


Task 07 Results

/ 47



Task 07 Results



Task 07 Results

**TASK 07  
THE FUTURE**

Use this circle all the best things about Loose parish, as you see them

Use this circle all the things that could be better in Loose parish, as you see them

*LOOSE VALLEY CON. AREA  
SWIRE VALLEY - SCOTS.*

Complete the following sentence: "In 15 years' time, Loose parish will be ...."

LOOSE NEIGHBOURHOOD PLAN  
Copyright © 2007, FERIA

Task 07 Results

**TASK 07  
THE FUTURE**

Use this circle all the best things about Loose parish, as you see them

Use this circle all the things that could be better in Loose parish, as you see them

*Architecture.  
Simulation of land  
Different materials layout  
Open natural valley  
People: The station features a bridge  
To improve safety in a rural parish  
People: a natural church community  
Great during the day  
A new street "Reflex" village to create  
Tactical*

*Some narrow roads  
closed!  
Some one way only!  
No parking on High Banks  
because the houses cannot  
gain access!  
Provide parking space around the  
village to clear the roads.  
Bad home for older people who don't  
have cars.*

Complete the following sentence: "In 15 years' time, Loose parish will be ...."

LOOSE NEIGHBOURHOOD PLAN  
Copyright © 2007, FERIA

Task 07 Results

**TASK 07  
THE FUTURE**

Use this circle all the best things about Loose parish, as you see them

Use this circle all the things that could be better in Loose parish, as you see them

*LOOSE VILLAGE :-  
IN STREET LIGHTS - RESTRUCTURED  
WAY.  
NO YELLOW LINES  
THE AMBITIOUS  
TOWN FIELD + CARPENTRY  
LOOSE AMBITIOUS AMBITION  
THE VALLEY CONSERVATION SOCIETY  
THE POST OFFICE  
THE OLD TELEPHONE BOX  
LOOSE - WALNUT TREE PUD.  
GOOD SCHOOLS.  
GREAT FOR WALKING.  
TERRIFIC SCENERY*

*BETTER CENTRAL OF DAY  
LESS LITTER  
SPEED OF TRAFFIC  
CENTRAL OF PARISH IN  
THE POST OFFICE AREA  
IE. VILLAGE RESTRUCTURE SIGN  
ALWAYS HAS A VEHICLE OBSCURED  
IT!*

Complete the following sentence: "In 15 years' time, Loose parish will be ...."

*'IDENTIFIABLE' - NOT JOINED UP WITH LINTON, THAUNTON, OR CUNHEATH*

LOOSE NEIGHBOURHOOD PLAN  
Copyright © 2007, FERIA

Task 07 Results

**TASK 07  
THE FUTURE**

Use this circle all the best things about Loose parish, as you see them

Use this circle all the things that could be better in Loose parish, as you see them

*There is a pub office  
that sells supplies  
They have nice wine  
very scenic  
OPEN SPACE PRO  
LOOSE AND  
TOUCH GOOD  
Barber's  
some of country  
GOOD SCHOOLS  
LOCAL PUPIL STATION.*

*TRAFFIC Calming / less congestion  
Parking more workings.  
more modern position  
Maybe farm shop / farmer's market*

Complete the following sentence: "In 15 years' time, Loose parish will be ...."

*more popular, cleaner, less rural, more of a town than a village, more cars, more people*

LOOSE NEIGHBOURHOOD PLAN  
Copyright © 2007, FERIA

Task 07 Results





## TASK 08 — DAYTIME, EVENING + NIGHT TIME

### SAFE AREAS — DAY TIME

- Most groups agreed that they generally felt safe across Loose Village and in Loose Valley.
- Brooks Field was mentioned as being safe on more than one occasion.
- The King George V Playing Field and park were both mentioned as safe.
- Other areas where people felt safe were at home, school, the shop, the pub and general community spaces/footpaths.

### SAFE AREAS — EVENING

- Most groups agreed that they generally felt safe across Loose Village and in Loose Valley.
- The King George V Playing Field was mentioned again along with the countryside and supervised activities e.g. Scouts.

### SAFE AREAS — NIGHT

- The village pubs (Chequers + Walnut Tree) came up on a few occasions along with the path home from the pub.
- Loose Village was mentioned several times although lack of street lighting was seen as a problem.
- Walking on main roads in Loose Valley, Kirkdale and the A229 all after dark were all mentioned as feeling safe.

### UNSAFE AREAS — DAY TIME

- Parking and traffic on Lancet Lane and nearby roads during school drop-off and pick-up times.
- A229 western pavement is too narrow and overgrown.
- A229 traffic volume for cyclists.
- Busbridge Road for pedestrians.
- Crossing A229 as traffic is too fast and needs better speed control.
- Pedestrian crossing on Leigh Avenue.
- Unsafe to walk along Well Street, Salts Lanes, Cripple Street and Linton Hill and Linton Corner.
- The steps from Old Loose Close.
- Parking at the shop.
- Dogs off the lead can make places feel unsafe.
- Dog mess on pavements.
- Unsafe to walk along Well Street due to traffic.

### UNSAFE AREAS — EVENING

- A229 traffic volume for both cyclists and pedestrians.
- Busbridge Road, Wells Street and Cripple Street.
- Linton Hill/Linton Corner.
- Waiting for buses.
- Brooks to Salts Pond as a pedestrian.
- Places in the village where there are no street lamps e.g. footpath by allotment, which is unlit in the evenings.
- Quarry Woods.

## UNSAFE AREAS — NIGHT

- A229 traffic volume for both cyclists and pedestrians, especially in winter.
- Walnut Tree Avenue and King George V playing field.
- Footpaths at the top of Pickering Street and waiting for buses.
- Some found walking through the village in darkness unsafe with a general lack of street lighting.
- Quarry and Wood areas were mentioned as well as Brooks to Salts Pond as a pedestrian.
- Burglaries from sheds are common with burglaries in the Norrington Road/ Leigh Avenue area.
- Busbridge Road + Well Street (no pavement and lots of traffic).
- Footpath to Valley Drive/Waldrin Drive and Cripple Street.

**TASK 08**  
**DAYTIME, EVENING + NIGHT TIME**

List the places in Loose that feel safe or unsafe at different times of the day and night — please use place names if the issues are site-specific.

safe	unsafe	safe	unsafe	safe	unsafe
VILLAGE AS A WHOLE	WOLVERHAMPTON	VILLAGE	QUARRY WOODS (DOG WALKING) YOUTH LIGHTING FIRE + WOODS LITTER (CANS/GLASS ETC.)	VILLAGE (JUST NEED TOWN BUT HAPPY TO USE TOWN AS DON'T WANT LIGHT POLLUTED FROM STREET LIGHTS)	STEALING FROM SHEDS/STABLES IS QUITE COMMON
	ALL local lanes (rock - runs)				

LOOSE NEIGHBOURHOOD PLAN  
VERSION 1.0001 2018-2019

tena

Task 08 Results

/ 51

**TASK 08**  
**DAYTIME, EVENING + NIGHT TIME**

List the places in Loose that feel safe or unsafe at different times of the day and night — please use place names if the issues are site-specific.

safe	unsafe	safe	unsafe	safe	unsafe
VALLEY LAKE VILLAGE	VALLEY LAKE A229 BUSBRIDGE RD	LOOSE VILLAGE	VALLEY LAKE GEORGE V A229 BUSBRIDGE RD	LOOSE VILLAGE	VALLEY LAKE GEORGE V A229 BUSBRIDGE RD

Task 08 Results

**TASK 08**  
**DAYTIME, EVENING + NIGHT TIME**

List the places in Loose that feel safe or unsafe at different times of the day and night — please use place names if the issues are site-specific.

safe	unsafe	safe	unsafe	safe	unsafe
LOOSE VILLAGE Most footpaths	MAIN ROAD (LOOSE SCHOOL, LISTON HILL) WADGET CROSSING  Cycling Linton Corner and A229 through Footpath, Haul Road	LOOSE VILLAGE Most footpaths	MAIN ROAD (opposite loose valley nursing home - behind Coppice of trees) - No lights - Footpath, Haul Road Cycling  Footpath by allotment unit Linton Corner and A229 through	LOOSE VILLAGE A229 after dark (not in winter) Most footpaths Village	Linton corner with A229 through safe A229 on winter nights

Task 08 Results

**TASK 08**  
**DAYTIME, EVENING + NIGHT TIME**

List the places in Loose that feel safe or unsafe at different times of the day and night — please use place names if the issues are site-specific.

safe	unsafe	safe	unsafe	safe	unsafe
Loose Junior School	Near School (traffic)			In your garden	Saint George's Field
				In your shed	
				In your house	

LOOSE NEIGHBOURHOOD PLAN  
Feria Urbanism 2017

Task 08 Results

**TASK 08**  
**DAYTIME, EVENING + NIGHT TIME**

List the places in Loose that feel safe or unsafe at different times of the day and night — please use place names if the issues are site-specific.

safe	unsafe	safe	unsafe	safe	unsafe
Loose Village Valley Brook countryside	SPUR (A229) BUS BRIDGE ROAD CRIPPLE STR. Highbanks Traffic SALTS LANE Parking at School Parking at shop Old Loose Hill LAUREL LANE School Park etc.	Loose Village countryside	A229 Busbridge Rd Traffic Highbanks Traffic CRIPPLE STR. Top of Old Loose Hill by Shop	Loose Village	A229 Busbridge Rd Traffic Highbanks Traffic CRIPPLE STR.

LOOSE NEIGHBOURHOOD PLAN  
Feria Urbanism 2017

Task 08 Results

**TASK 08**  
**DAYTIME, EVENING + NIGHT TIME**

List the places in Loose that feel safe or unsafe at different times of the day and night — please use place names if the issues are site-specific.

safe	unsafe	safe	unsafe	safe	unsafe
walking around village	Footpath too narrow from Village - Rd. on bus. From traffic and vegetation. Busbridge Rd. is unsafe to walk on. Daytime parking on rd + footpaths as school times.	village in daylight	in Loose village. no street lights. Ends of Loose Rd. and footpaths are very narrow when traffic is heavy he comes. Busbridge Rd. heavy traffic	village, because of traffic no street lights a many cars etc.	Busbridge Rd. due to narrow road + heavy traffic

LOOSE NEIGHBOURHOOD PLAN  
Feria Urbanism 2017

Task 08 Results

**TASK 08**  
**DAYTIME, EVENING + NIGHT TIME**

List the places in Loose that feel safe or unsafe at different times of the day and night — please use place names if the issues are site-specific.

safe	unsafe	safe	unsafe	safe	unsafe
VALLEY WHEN WALKING WITH FAMILY	VALLEY WHEN WALKING ALONE	PARK MAIN ROAD IN VALLEY	PARK WHEN DOGS ARE LOOSE	WALKING ALONG MAIN ROADS	TRAFFIC + ROAD CROSSING DARK ROADS + PAVEMENTS
PARK PUB/ * COMMUNITY SPACE	ROADS + SPEED	*	ROADS + SPEED	*	ROADS + SPEED
PARK WHEN DOGS ARE LOOSE					PARK - DOGS BUS STOP WALNUT TREE AVE / PUB CAR PARK







LOOSE NEIGHBOURHOOD PLAN  
Feria Urbanism 2017

Task 08 Results



**TASK 08**  
**DAYTIME, EVENING + NIGHT TIME**




List the places in Looe that feel safe or unsafe at different times of the day and night — please use place names if the issues are site-specific.

safe	unsafe	safe	unsafe	safe	unsafe
 Home School Home Parents bus Shop	 bus Home Home Bus	 Home School Home Home	 Pub's Street town Home	 Home In the Home Home	 Woods Public Street town Home Underpass Home Cycling Clabing

### Task 08 Results

**TASK 08**  
**DAYTIME, EVENING + NIGHT TIME**

List the places in Loose that feel safe or unsafe at different times of the day and night — please use place names if the issues are site-specific.

DAYTIME		EVENING		NIGHT TIME	
	<p>safe</p> <p>King George Playing Field</p> <p>Loose Road</p> <p>Loose Valley</p>		<p>safe</p> <p>Loose Valley</p> <p><del>Walnut Tree Ave</del> Loose Road</p>		<p>safe</p> <p>Local Pubs</p> <p>Loose Valley</p>
	<p>unsafe</p> <p>Loose Road</p>		<p>unsafe</p> <p><del>Walnut Tree Ave</del> Loose Road</p>		<p>unsafe</p> <p>Walnut Tree Ave</p> <p>Riley</p> <p>King George Playing Field</p> <p>Boughton Lane</p> <p>Shops</p>




LOOSE NEIGHBOURHOOD PLAN

### Task 08 Results

/ 53

**TASK 08**  
**DAYTIME, EVENING + NIGHT TIME**

List the places in Loose that feel safe or unsafe at different times of the day and night — please use place names if the issues are site-specific.


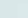

safe	unsafe	safe	unsafe	safe	unsafe
 <p>loose valley loose village</p> <p>Loose main road especially at school times eg. Carrot Lane area &amp; Copper Tree Court</p>		 <p>VILLAGE FEEL SAFE</p> <p>ENGORGED PLATING FIELD. WAITING FOR BUSES</p> <p>ROSEBUD ROAD NO PAVEMENT LOTS OF TRAFFIC USE AS A RAT RUN WHEN SCHOOL COME OUT. ALSO WOLF STREET AS ABOVE</p>		 <p>CHEQUERS PUB OR AT HOME</p> <p>RDH 239 BAD LACK OF STREET LIGHTING ON SING BAYS.</p> <p>WAITING FOR BUSES ROSEBUD ROAD NO PAVEMENT LOTS OF TRAFFIC USE AS A RAT RUN. ALSO WELL STREET AS ABOVE</p>	

LOOSE NEIGHBOURHOOD PLAN

### Task 08 Results

**TASK 08**  
**DAYTIME, EVENING + NIGHT TIME**

List the places in Looe that feel safe or unsafe at different times of the day and night — please use place names if the issues are site-specific.

safe	unsafe	safe	unsafe	safe	unsafe
	 (Afternoon) TRAFFIC ON BUSBRIDGE ROAD, WELL STREET PEDESTRIAN CROSSINGS AT END OF LOGH AVE TOP OF DRINKS LANE POOR PARKING AT SCHOOLS CYCLING A229	 safe CYCLING A229	 safe CYCLING A229 BURGLARIES (2005) WORKINGTON ROAD LOGH AVENUE AREA		

### Task 08 Results

**TASK 08**  
**DAYTIME, EVENING + NIGHT TIME**

List the places in Loose that feel safe or unsafe at different times of the day and night — please use place names if the issues are site-specific.

Daytime	Evening	Night
<p><b>Loose Valley "Village"</b></p> <p><b>A229</b></p> <p>TO BE SAFE, YOU MUST BE ALERT AND AWARE OF YOUR SURROUNDINGS. THE MORE YOU KNOW ABOUT YOUR AREA, THE MORE YOU CAN PROTECT YOURSELF AND YOUR FAMILY.</p> <p>BE AWARE OF YOUR SURROUNDINGS. THE MORE YOU KNOW ABOUT YOUR AREA, THE MORE YOU CAN PROTECT YOURSELF AND YOUR FAMILY.</p>	<p>BE AWARE OF YOUR SURROUNDINGS. THE MORE YOU KNOW ABOUT YOUR AREA, THE MORE YOU CAN PROTECT YOURSELF AND YOUR FAMILY.</p> <p>BE AWARE OF YOUR SURROUNDINGS. THE MORE YOU KNOW ABOUT YOUR AREA, THE MORE YOU CAN PROTECT YOURSELF AND YOUR FAMILY.</p>	<p>BE AWARE OF YOUR SURROUNDINGS. THE MORE YOU KNOW ABOUT YOUR AREA, THE MORE YOU CAN PROTECT YOURSELF AND YOUR FAMILY.</p> <p>BE AWARE OF YOUR SURROUNDINGS. THE MORE YOU KNOW ABOUT YOUR AREA, THE MORE YOU CAN PROTECT YOURSELF AND YOUR FAMILY.</p>

LOOSE NEIGHBOURHOOD PLAN  
© 2011 FERIA URBANISM

Task 08 Results

**TASK 08**  
**DAYTIME, EVENING + NIGHT TIME**

List the places in Loose that feel safe or unsafe at different times of the day and night — please use place names if the issues are site-specific.

Daytime	Evening	Night
<p>The steps from Old Loose Chase down to the road, opposite the Chapel. To stop.</p> <p>A229 with pavement - too narrow in width - dangerous.</p>		<p>Walking from the village to school. (Don't approach by the road.)</p>

LOOSE NEIGHBOURHOOD PLAN  
© 2011 FERIA URBANISM

Task 08 Results

**TASK 08**  
**DAYTIME, EVENING + NIGHT TIME**

List the places in Loose that feel safe or unsafe at different times of the day and night — please use place names if the issues are site-specific.

Daytime	Evening	Night
<p>Generally feel safe in area.</p> <p>Cricket Club on foot path - speak to mother - make better space around cricket.</p> <p>also had parking area behind open - but - difficult to reach.</p> <p>Sometimes on my bike (lorry).</p>	<p>Generally feel safe in area.</p> <p>Cricket Club on foot path - speak to mother - make better space around cricket.</p> <p>Looks to Sally Road in a play area.</p> <p>Sometimes on my bike (lorry).</p>	<p>Looks to Sally Road in a play area.</p> <p>Sometimes on my bike (lorry).</p>

LOOSE NEIGHBOURHOOD PLAN  
© 2011 FERIA URBANISM

Task 08 Results

**TASK 08**  
**DAYTIME, EVENING + NIGHT TIME**

List the places in Loose that feel safe or unsafe at different times of the day and night — please use place names if the issues are site-specific.

Daytime	Evening	Night
<p>Breaks Field</p> <p>Dogs mess on pavements</p> <p>Parking in Lowest Lane at school times.</p> <p>Traffic volume and lorries on A229.</p>	<p>Dogs mess in King George V playing field.</p>	<p>Kirkdale</p> <p>Road from pub to home</p> <p>Footpath to Valley Drive/Water Drive</p> <p>Footpath to Valley Drive/Water Drive</p> <p>Footpath to Valley Drive/Water Drive</p> <p>Footpath to Valley Drive/Water Drive</p>

LOOSE NEIGHBOURHOOD PLAN  
© 2011 FERIA URBANISM

Task 08 Results





/ 55

**Task Tables** All participants completed each of the eight different tasks, contributing valuable material to the evidence base for the neighbourhood plan

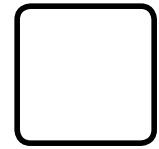


**COPIES OF THE WORKSHOP MATERIALS**  
SEPTEMBER 2014



## TASK 01

### PEOPLE + PLACES



List some of the challenges or opportunities faced by these different groups in Loose — please use place names if the issues are site-specific.



teenagers



businesses  
+ employers



pensioners  
+ empty-nesters



young professionals  
without children



families  
with young children



visitors  
+ tourists



students

/ 58



## TASK 02

### THIS IS A SPECIAL PLACE

Rank the one-word descriptions for Loose as it is now to create a top ten list.

1st.

2nd.

3rd.

4th.

5th.

6th.

7th.

8th.

9th.

10th.

**TASK 02**

**This is a special place**

**OPTIONS TO  
CHOOSE FROM**

**Inspiring**

**Enterprising**

**Green**

**Serene**

**Distinctive**

**Unique**

**Personal**

**Clean**

**Fun**

**Ingenious**

**TASK 02**

**This is a special place**

**OPTIONS TO  
CHOOSE FROM**

**Safe**

**Friendly**

**Imaginative**

**Inclusive**

**Attractive**

**Harmonious**

**Open**

**Considered**

**Refreshing**

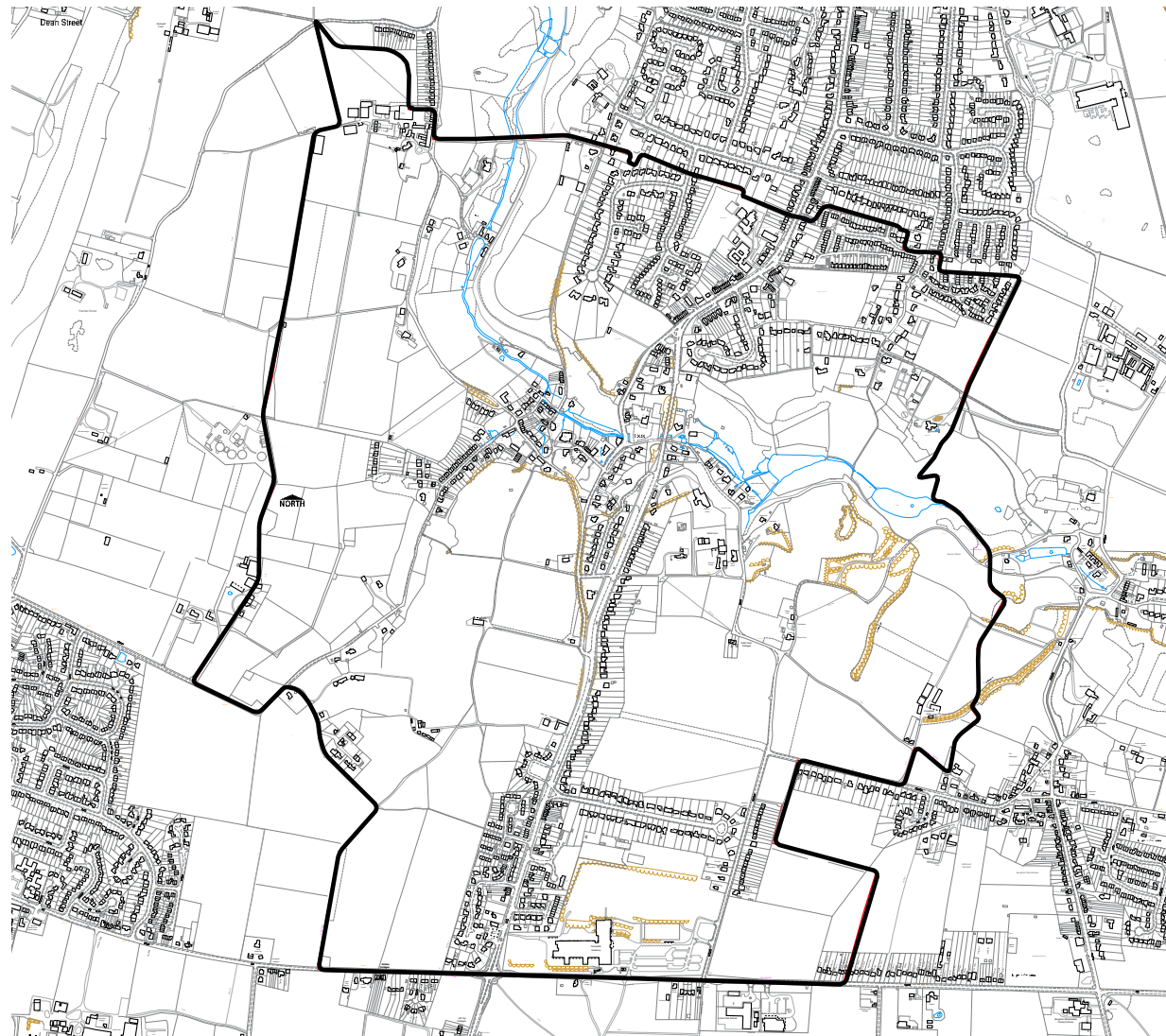
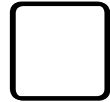
**Dynamic**



### TASK 03

#### DIRECTION OF GROWTH?

There is no significant new housing proposed for Loose at this time but if there was, where would it go? How should it relate to the existing village? Explain your thinking.



Reproduced from the Ordnance Survey mapping with the permission of the Controller of Her Majesty's Stationery Office © Crown copyright. Unauthorised reproduction infringes Crown copyright and may lead to prosecution or civil proceedings. The Maidstone Borough Council Licence No. 100019636, 2011.

**LOOSE NEIGHBOURHOOD PLAN**  
VISIONING EVENT 10.09.2014

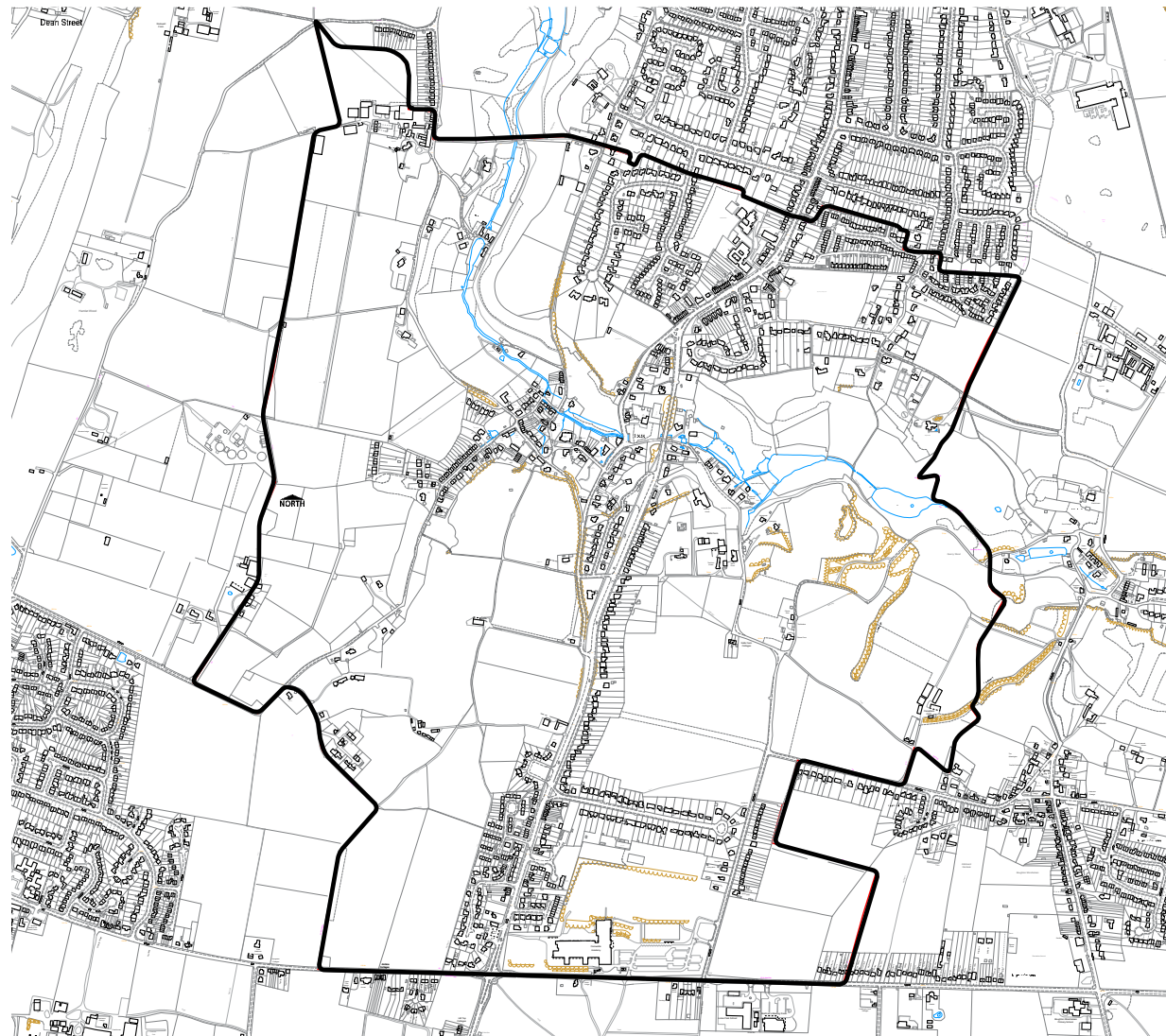
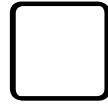
500 m

**feria**  
www.feria-urbanism.eu

## TASK 04a

**PLACES YOU CHERISH, PLACES YOU DON'T**

Place the coloured dots on the plan to mark places you cherish (green) and places you don't (red) — write a few words against each dot to explain why.



Reproduced from the Ordnance Survey mapping with the permission of the Controller of Her Majesty's Stationery Office © Crown copyright. Unauthorised reproduction infringes Crown copyright and may lead to prosecution or civil proceedings. The Maidstone Borough Council Licence No. 100019636, 2011.

**LOOSE NEIGHBOURHOOD PLAN**  
VISIONING EVENT 10.09.2014

1:5000@A1  
500 m

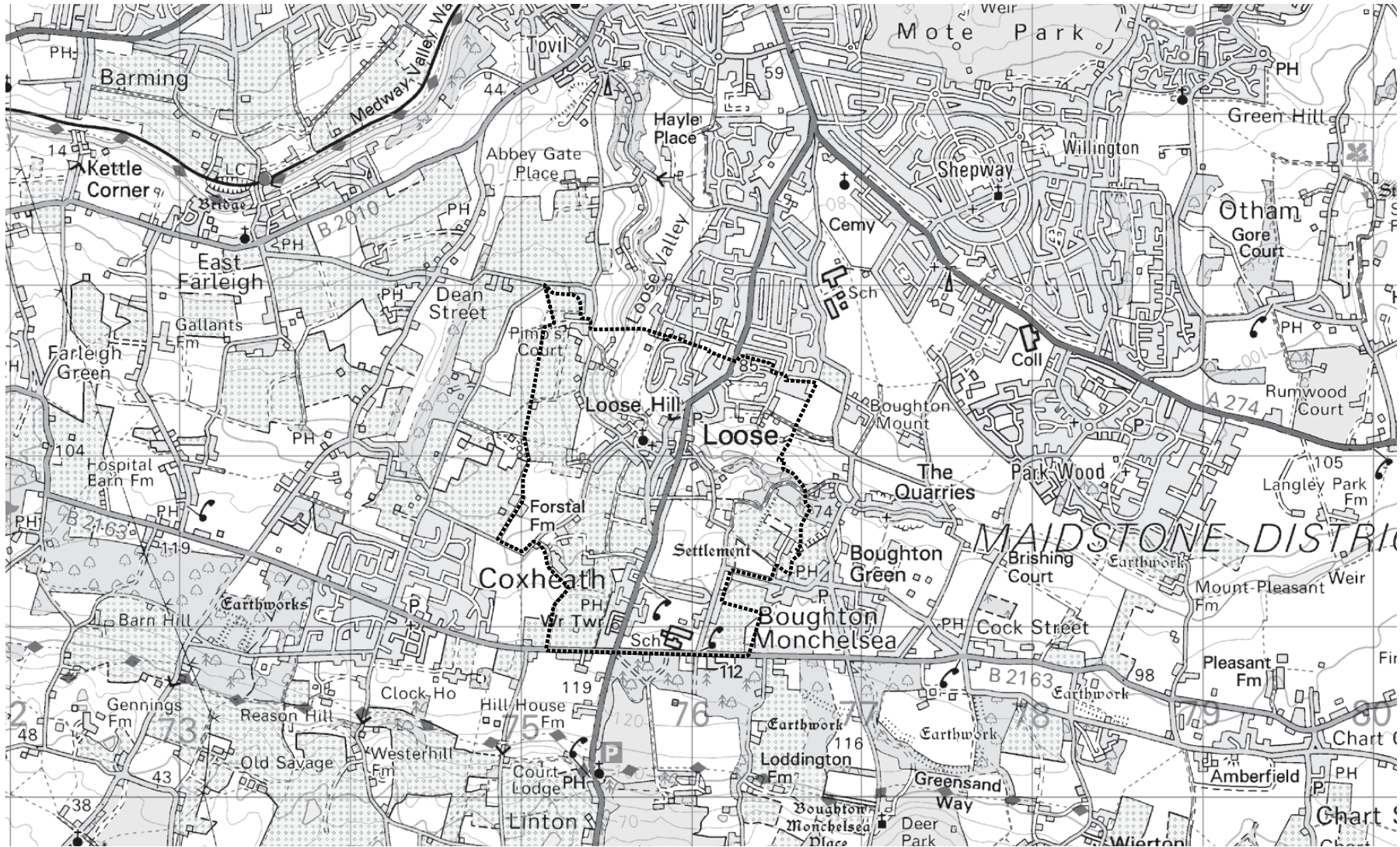
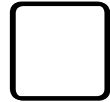
**feria**  
www.feriaurbanism.eu



## TASK 04b

**PLACES YOU CHERISH, PLACES YOU DON'T**

Place the coloured dots on the plan to mark places you cherish (green) and places you don't (red) — write a few words against each dot to explain why.



Reproduced from the Ordnance Survey mapping with the permission of the Controller of Her Majesty's Stationery Office © Crown copyright. Unauthorised reproduction infringes Crown copyright and may lead to prosecution or civil proceedings. The Maidstone Borough Council Licence No. 100019636, 2011.

**LOOSE NEIGHBOURHOOD PLAN**  
VISIONING EVENT 10.09.2014

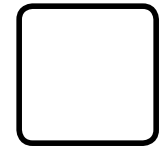
1:10,000@A1  
1 km

**feria**  
www.feriaurbanism.co.uk



## TASK 05

### YOUR MAIN CHALLENGES



Rank the topics and issues to  
create a top ten list.

1st.

2nd.

3rd.

4th.

5th.

6th.

7th.

8th.

9th.

10th.

/ 65

**TASK 05**

**Your main challenges**

**OPTIONS TO  
CHOOSE FROM**

**HOUSING GROWTH**

**SHOPS**

**NON-SCHOOL YOUTH OPPORTUNITIES**

**OPPORTUNITIES FOR SENIORS + THE RETIRED**

**SCHOOLS + EDUCATION**

**SPORTS + LEISURE PROVISION**

**LEADERSHIP + VOLUNTEERING**

**COUNTRYSIDE PROTECTION**

**ACCESS TO RECREATIONAL LAND**

**HEALTH SERVICES**

**TASK 05**

**Your main challenges**

**OPTIONS TO  
CHOOSE FROM**

**ARCHITECTURAL QUALITY**

**SENSE OF COMMUNITY**

**TRAFFIC**

**RAIL SERVICES**

**EMPLOYMENT SPACE — offices**

**EMPLOYMENT SPACE — workshop/industrial**

**EMPLOYMENT SPACE — work from home**

**SUPER-FAST BROADBAND**

**TOWN SQUARES + CIVIC SPACES**

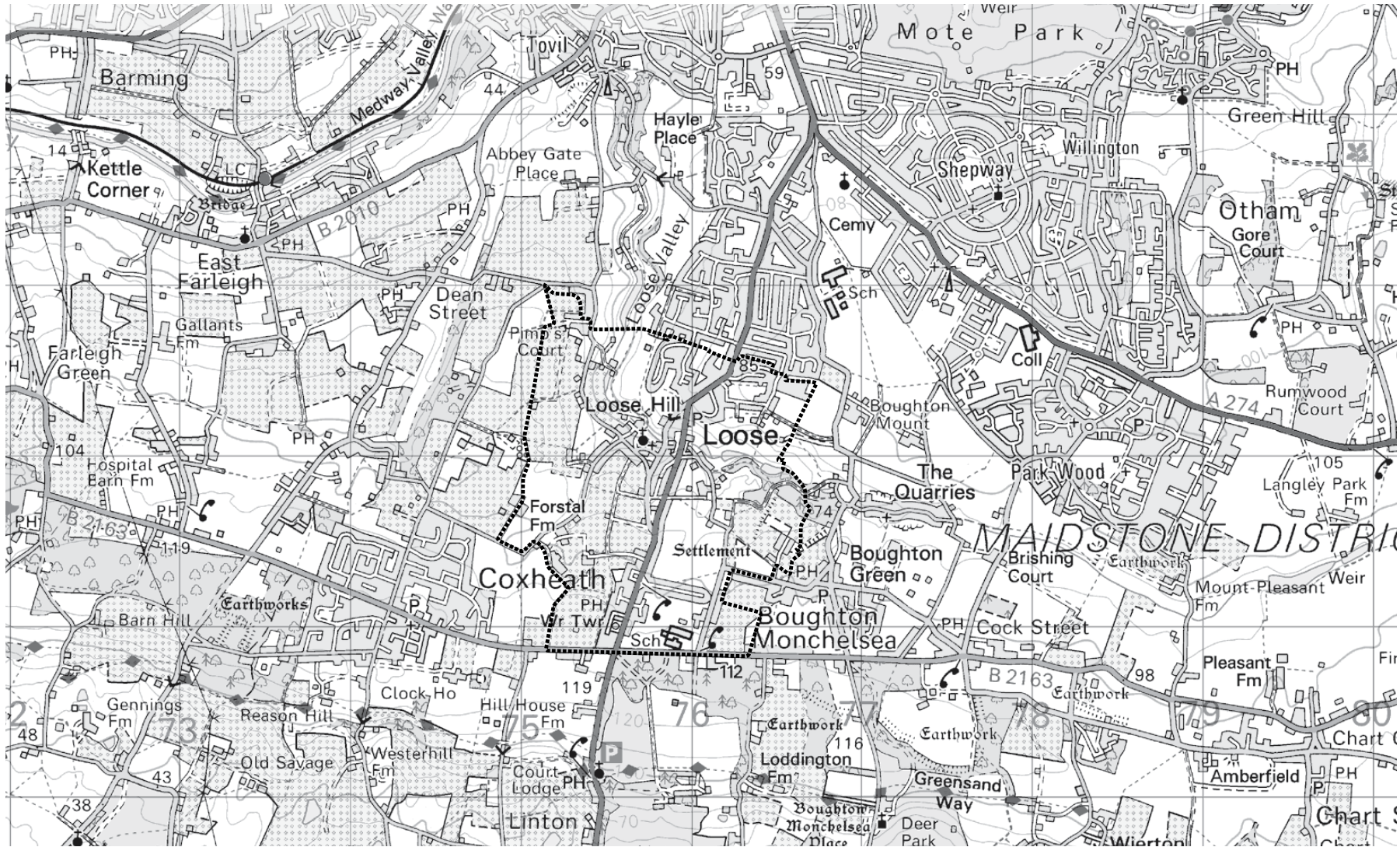
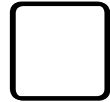
**COMMUNITY ORGANISATION + STRUCTURE**



## TASK 06a

**STREETS, SPACES + LANES**

- Use the pens to mark out the main routes between where people live and where they work, shop, go to school etc.
- Write a few words to explain the experience of using these routes as a pedestrian, cyclist, horse-rider or car driver.



Reproduced from the Ordnance Survey mapping with the permission of the Controller of Her Majesty's Stationery Office © Crown copyright. Unauthorised reproduction infringes Crown copyright and may lead to prosecution or civil proceedings. The Maidstone Borough Council Licence No. 100019636, 2011.

**LOOSE NEIGHBOURHOOD PLAN**  
VISIONING EVENT 10.09.2014

1:10,000@A1  
1 km

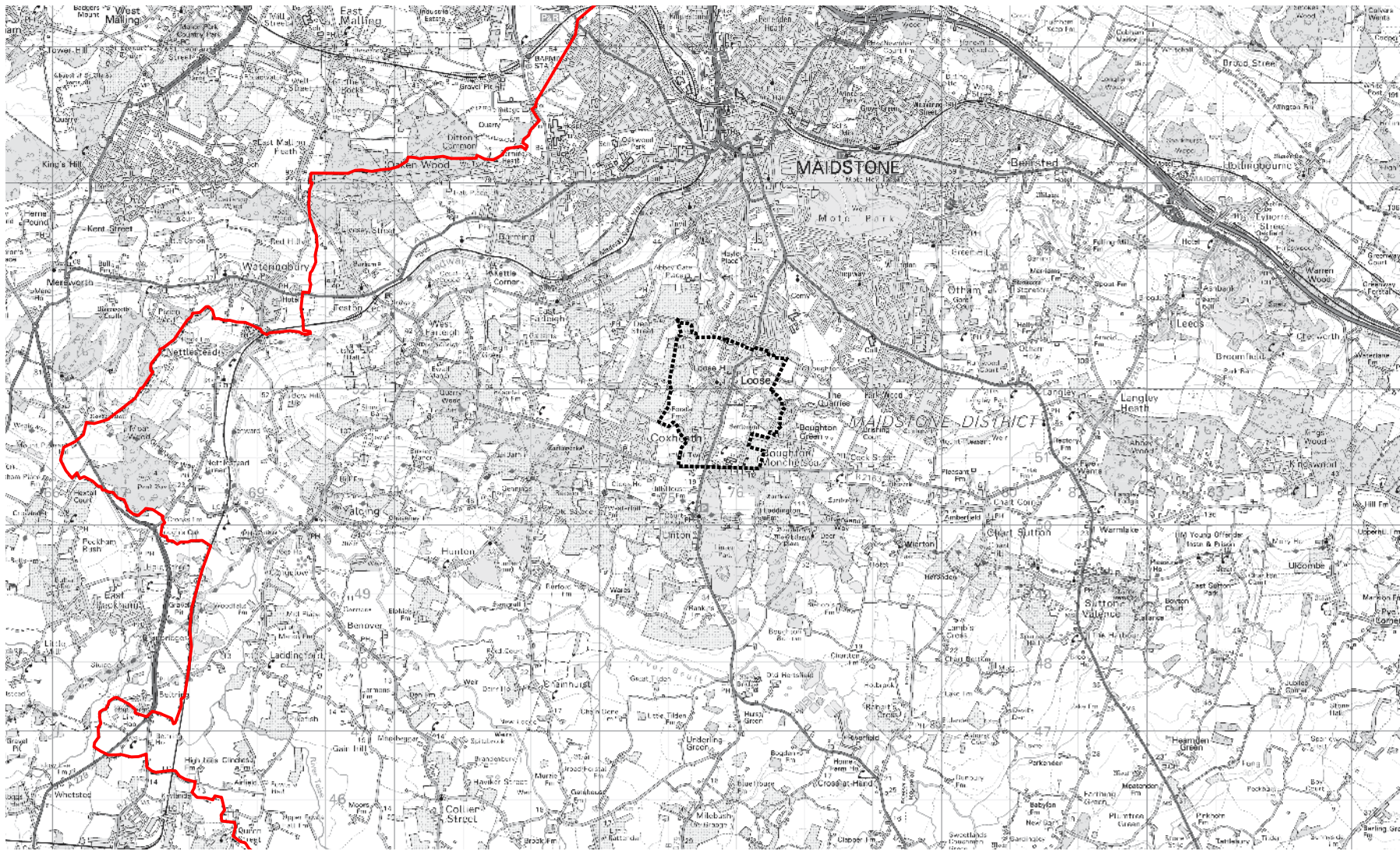
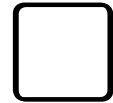
**feria**  
www.feriaurbanism.eu



## TASK 06b

**STREETS, SPACES + LANES**

- Use the pens to mark out the main routes between where people live and where they work, shop, go to school etc.
- Write a few words to explain the experience of using these routes as a pedestrian, cyclist, horse-rider or car driver.

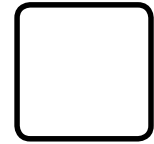


LOOSE NEIGHBOURHOOD PLAN  
VISIONING EVENT 10.09.2014

1:25,000@A1  
5km

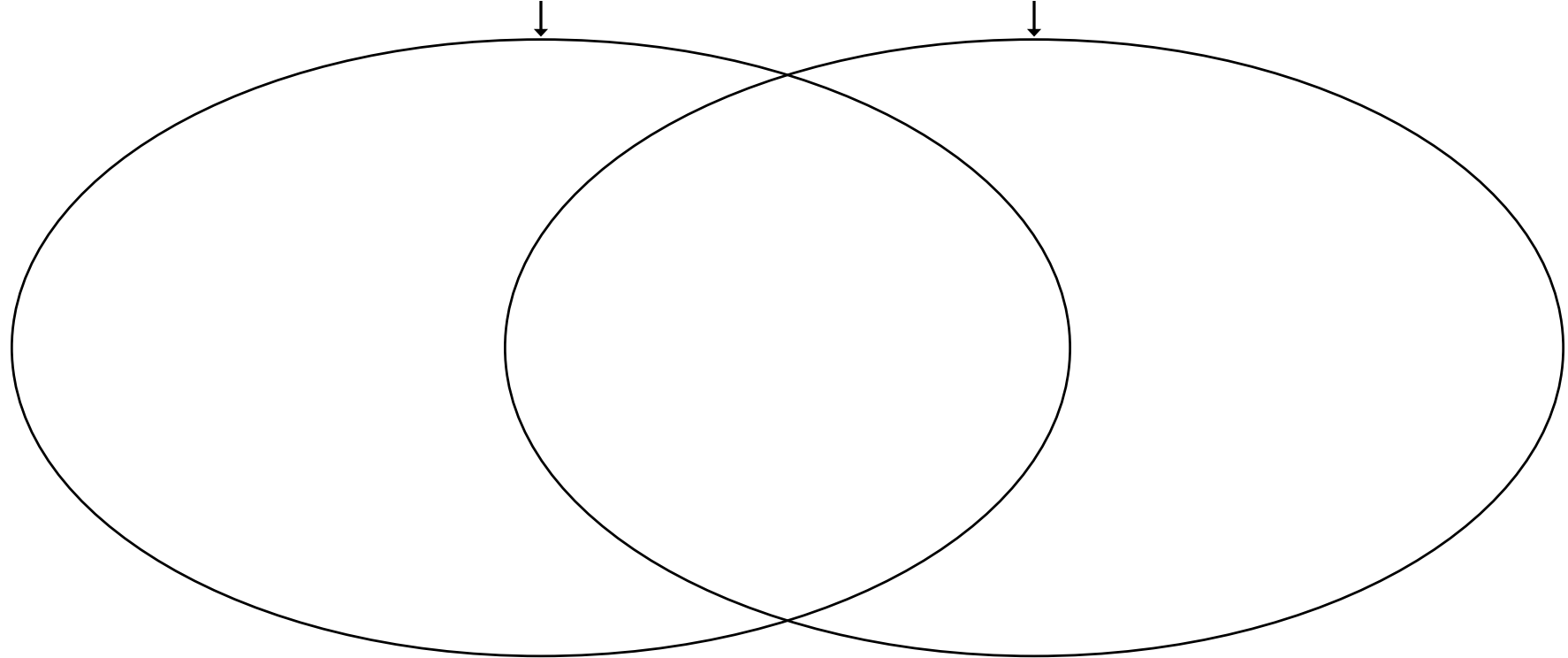
feria  
www.feriaurbanism.eu

## TASK 07 THE FUTURE



List in this circle all the best things about  
Loose parish, as you see them

List in this circle all the things that could  
be better in Loose parish, as you see them



Complete the following sentence **“In 15 years’ time, Loose parish will be ....**

---

---

---

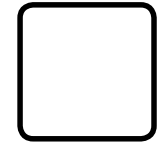
---

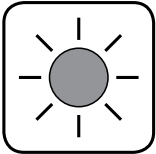
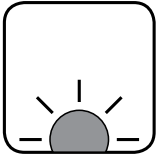



## TASK 08

**DAYTIME, EVENING + NIGHT TIME**

List the places in Loose that feel safe or unsafe at different times of the day and night — please use place names if the issues are site-specific.



<p>.....</p>		<p>.....</p>	<p>.....</p>		<p>.....</p>	<p>.....</p>		<p>.....</p>		
safe		unsafe		safe		unsafe		safe		unsafe
<p>.....</p>		<p>.....</p>		<p>.....</p>		<p>.....</p>		<p>.....</p>		<p>.....</p>

[ BLANK PAGE ]

[ BLANK PAGE ]



